

User manual

DESCRIPTION

The HIQ Safe Gate system consists of several different safety procedures and devices that allow or restrict access. Granting access is based on the number of people in the building and on fulfilling certain entry conditions, such as hand disinfection, medical condition (normal body temperature), use of a protective mask ..., which becomes quite useful in these times with current problems with epidemic. The system can be used in office buildings, hospitals, airports, stadiums,...

Number of different functionalities of safe gate will be presented next.

People counting (TOF) sensor

Safe gate allows counting and restricting access based on the number of people. It counts people entering and exiting the building with TOF sensor.

TOF sensor is installed facing down above entrance to the area you want to count people in or out of. The counter works by detecting when a person crosses an invisible count line that has been configured in settings.



QR code and RFID card reader

Reader is installed on Safe gate to determine person's user profile.



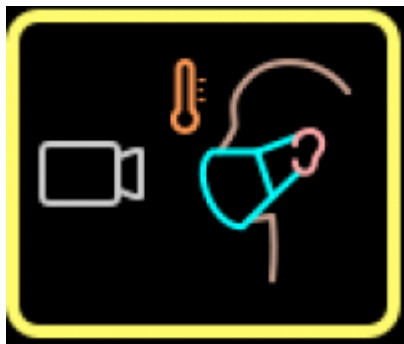
Hand sanitizer

Safe gate checks if person that wants to enter, had applied hand sanitizer.



Mask and body temperature scanner

Scanner scans person's face for mask and check his temperature. If it's not wearing a mask or it's body temperature is too high, it's not allowed to enter.



Entry conditions

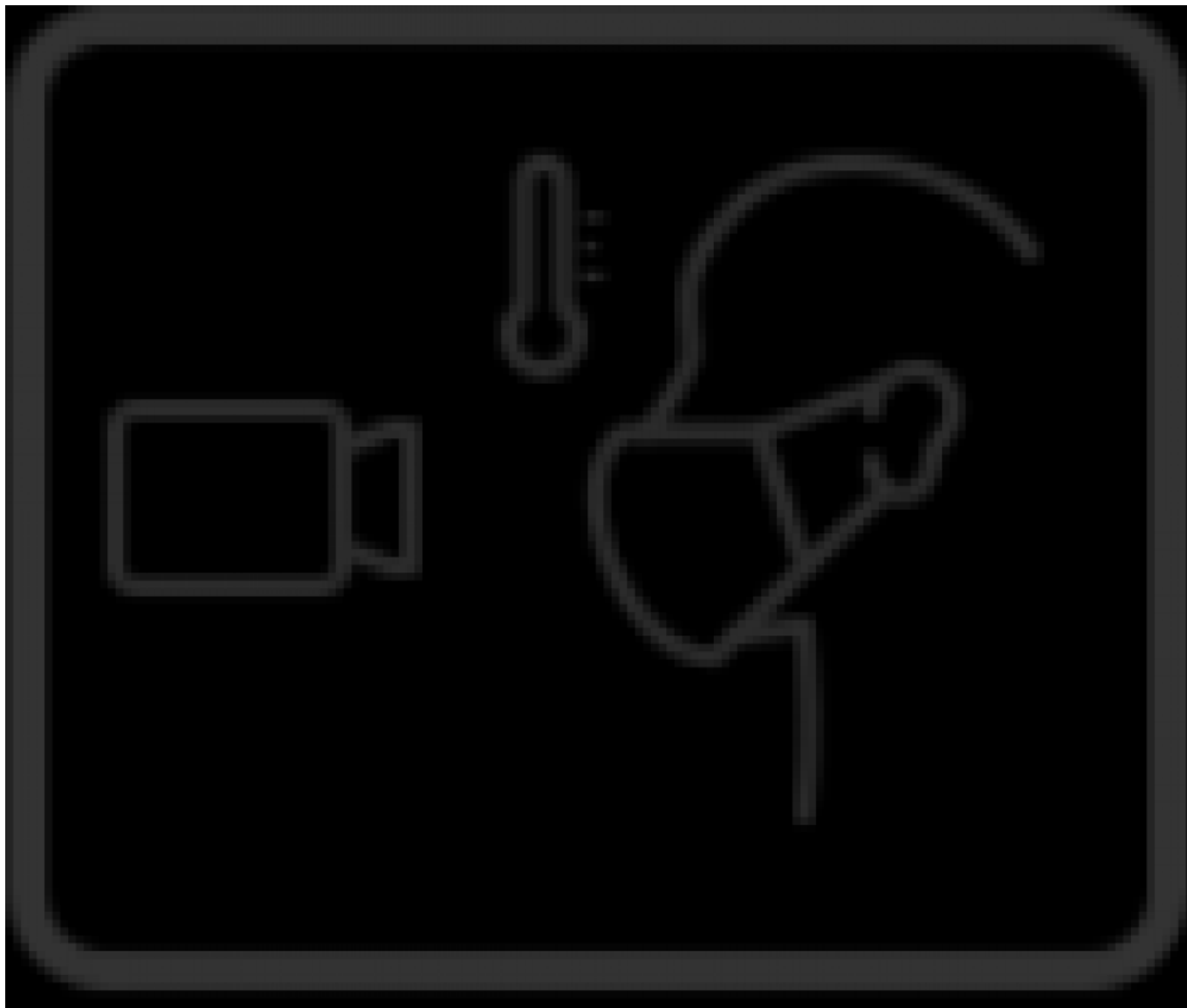
Safe gate can check if the person entering is wearing a face mask, if it applied hand sanitizer and if it has a fever. If it fails the conditions that are required, the person can't enter.

Safe gate allows granting entry by scanning a card (or QR code). There are three user profiles:

User profiles - access level meaning	
L1	This is normal level of access
L2	This is VIP level of access
UL	This is employee level of access

Alternatively, person can enter if the receptionist gives it an allowance. In this case, receptionist confirms level of access by identifying the person.


There are icons that are shown on the graphical display, so the person entering can see, what it must do next to enter. The graphical display shows condition you have to met next or alternatively if you are allowed to enter or have to exit the building. On the top line there are icons of all conditions and the counter of people. Colored conditions have to be met to enter, gray conditions doesn't have to be met or can't be met yet. On the rest of the screen, there is a big icon of a condition which should be met next. When it's met, the icon changes to next required condition. Next to the icon is text in three lines. On the first line there's a caption, on the other two lines is a text associated with a required condition that is shown with a big icon. The screen looks similar to the next picture:



There are many different border colors that change if the conditions is required (or not) and if the condition is met (or not).

Border color meaning	
<input checked="" type="checkbox"/>	Grayed out This condition is enabled, but it can't be met right now
<input checked="" type="checkbox"/>	Yellow This condition must be met and is waiting for the person to do it
<input checked="" type="checkbox"/>	Orange From now on you can enter only with VIP allowance
<input checked="" type="checkbox"/>	Green Everything is okay, you're clear to enter
<input checked="" type="checkbox"/>	Red Something is wrong, you must not enter
<input checked="" type="checkbox"/>	Gray This condition doesn't have to be met because it's disabled

Status overview		
<input checked="" type="checkbox"/>	Occupation status and limit count	It shows occupied status and remaining count to the limit of people. First (upper) number shows count of people with normal access, second (lower) number shows count of people with VIP access
<input checked="" type="checkbox"/>	Hand sanitizer status	It shows if person had applied hand sanitizer
<input checked="" type="checkbox"/>	Allowance status	It shows if person has a fever and if he wears a facemask
<input checked="" type="checkbox"/>	Card reader	It shows if the use of entry card is needed and the user's level of access
<input checked="" type="checkbox"/>	Confirmation status	It shows if the receptionist had left you in and the person's user profile

 Enter status	It shows if person should enter or exit
------------------------------------------------------------------------------------------------	-----------------------------------------

Different scenarios shown on display:

In the upper left corner the counter is shown. If it's border is green, both user profiles can enter. Upper counter is for the number of the people with **normal** profile that can still enter the building (2), bottom counter is for the number of the people with **VIP** profile that can still enter (4). Caption is set to "Welcome"

Counter's border's icon is green, which means both level of access can enter (normal access has 2 spots left, VIP has 4 spots left).



When **normal** capacity is full, but **VIP** can still enter the border of counter turns orange and the caption changes (for example) to: "VIP only".

Because normal access capacity is full, the counter's icon's border turns orange. From now on, only VIP access can enter, as they have two more spots.



When **VIP** capacity is also full and only **employees** can enter, the border of counter icon changes to red and the big icon changes to this. Here the caption is set to: "Filled to capacity and the text is set to: "Please wait for freeing."

Counter's border's icon is red which means neither VIP nor normal access can enter (only employees can)



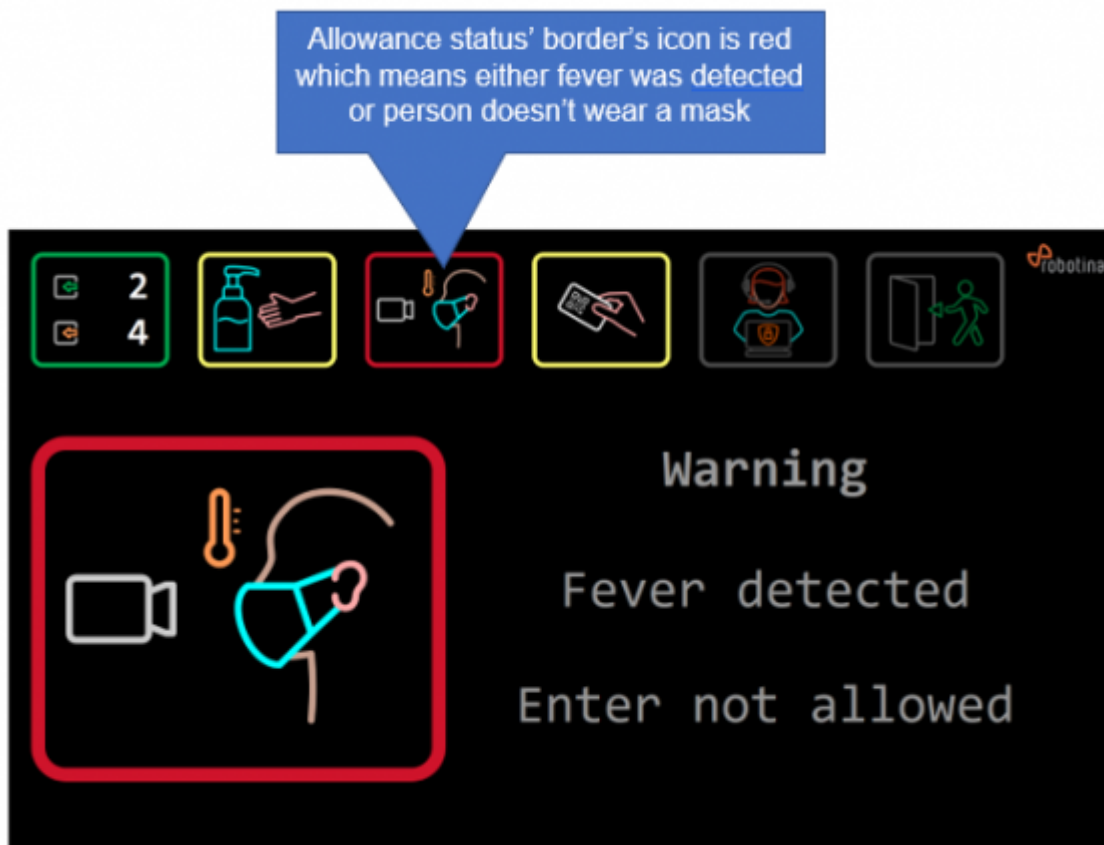
This is the icon that is shown if the alarm is triggered. The border of enter status changes to red. The caption changes to: "Alarm", and the text changes to: "Unauthorized entry, leave immediately".

Enter status' border's icon is red, which means that alarm was triggered



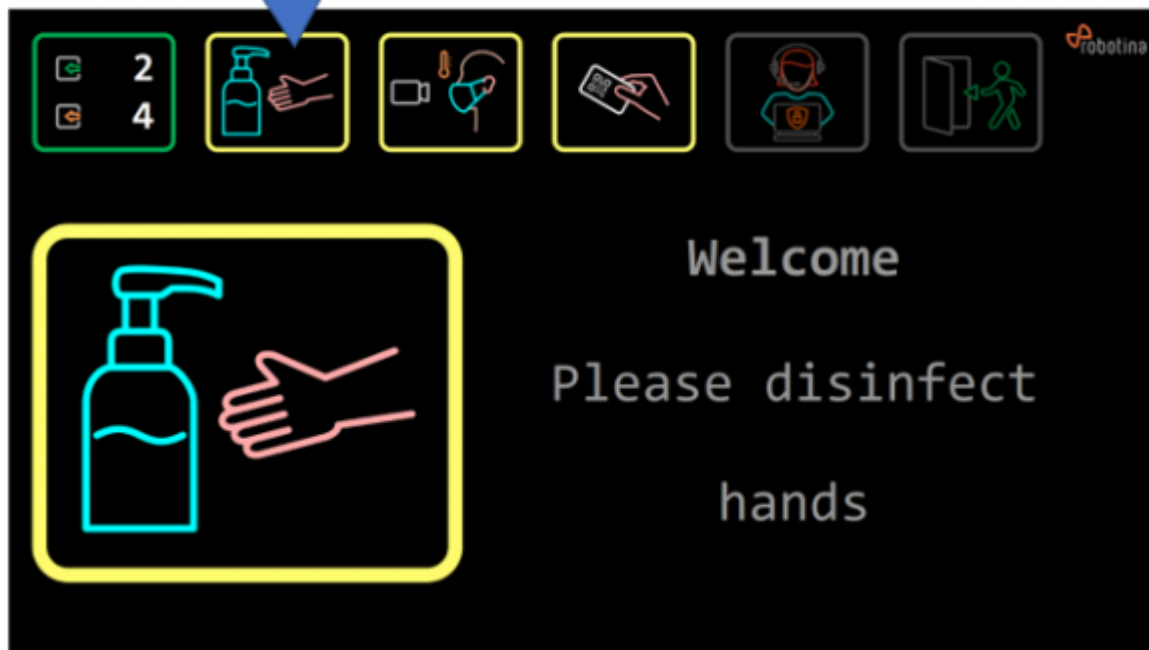
This is the icon that is shown if the fever is detected or if the person doesn't wear a face mask.

Allowance status' icon border changes to red. The caption changes to "Warning" and the text changes to "Fever detected".

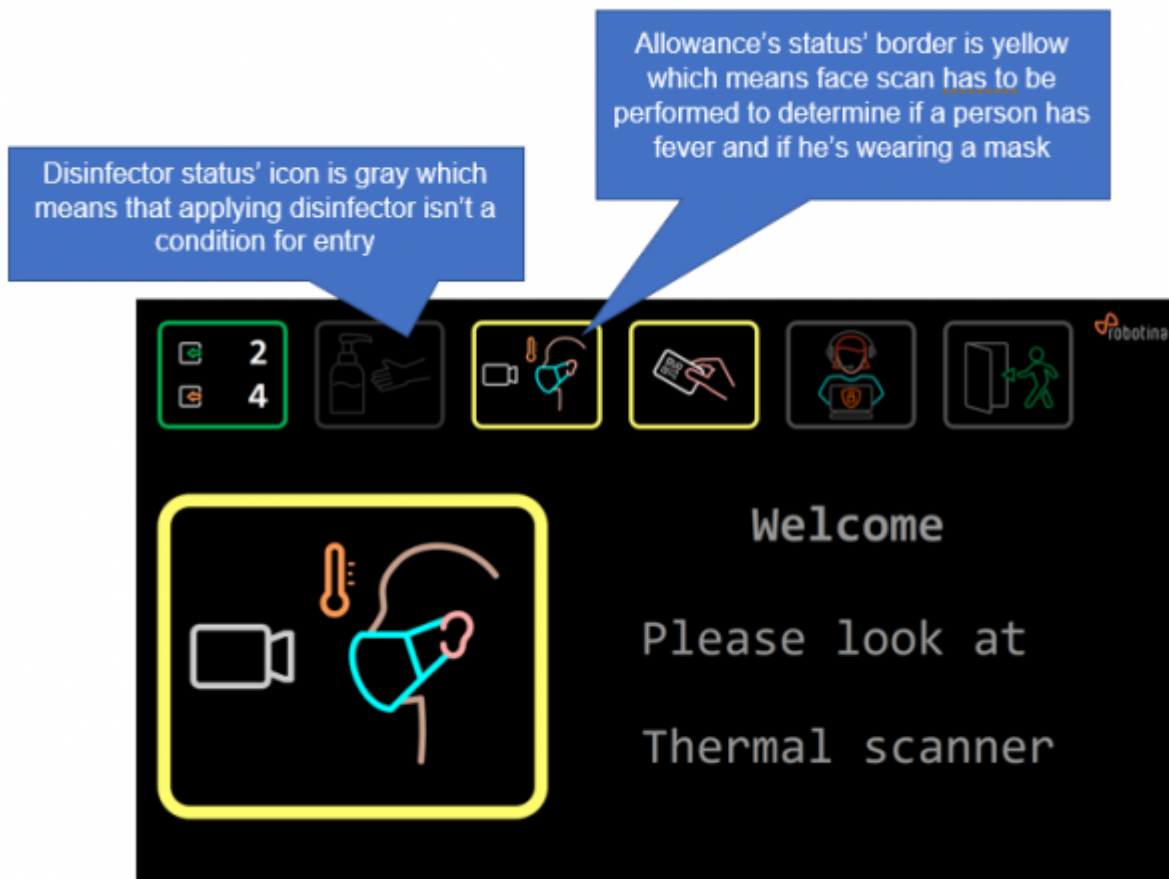


This is the icon that is shown if the required condition is to disinfect hands. Icon's border is yellow which means it's required. Text is set to " Please disinfect hands".

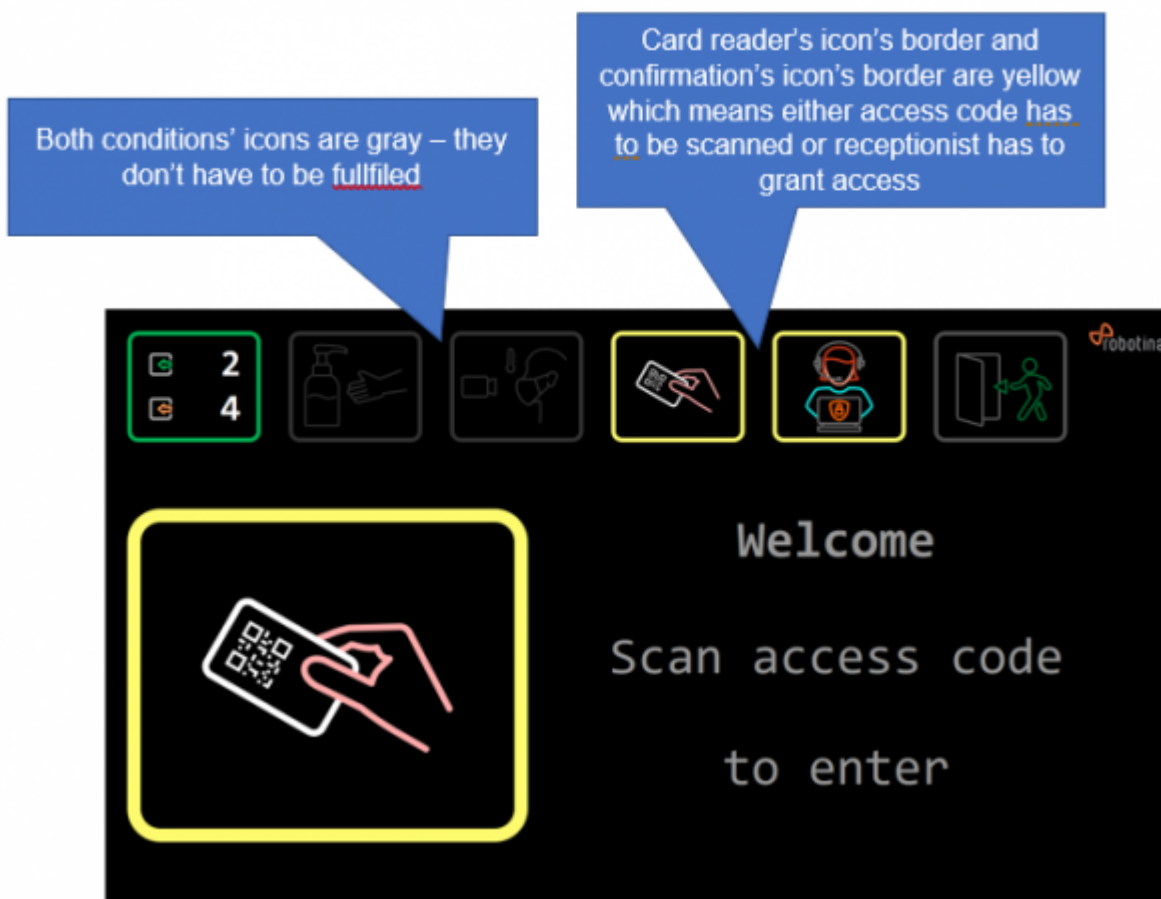
Disinfector status' border's color is yellow which means the disinfector has to be applied



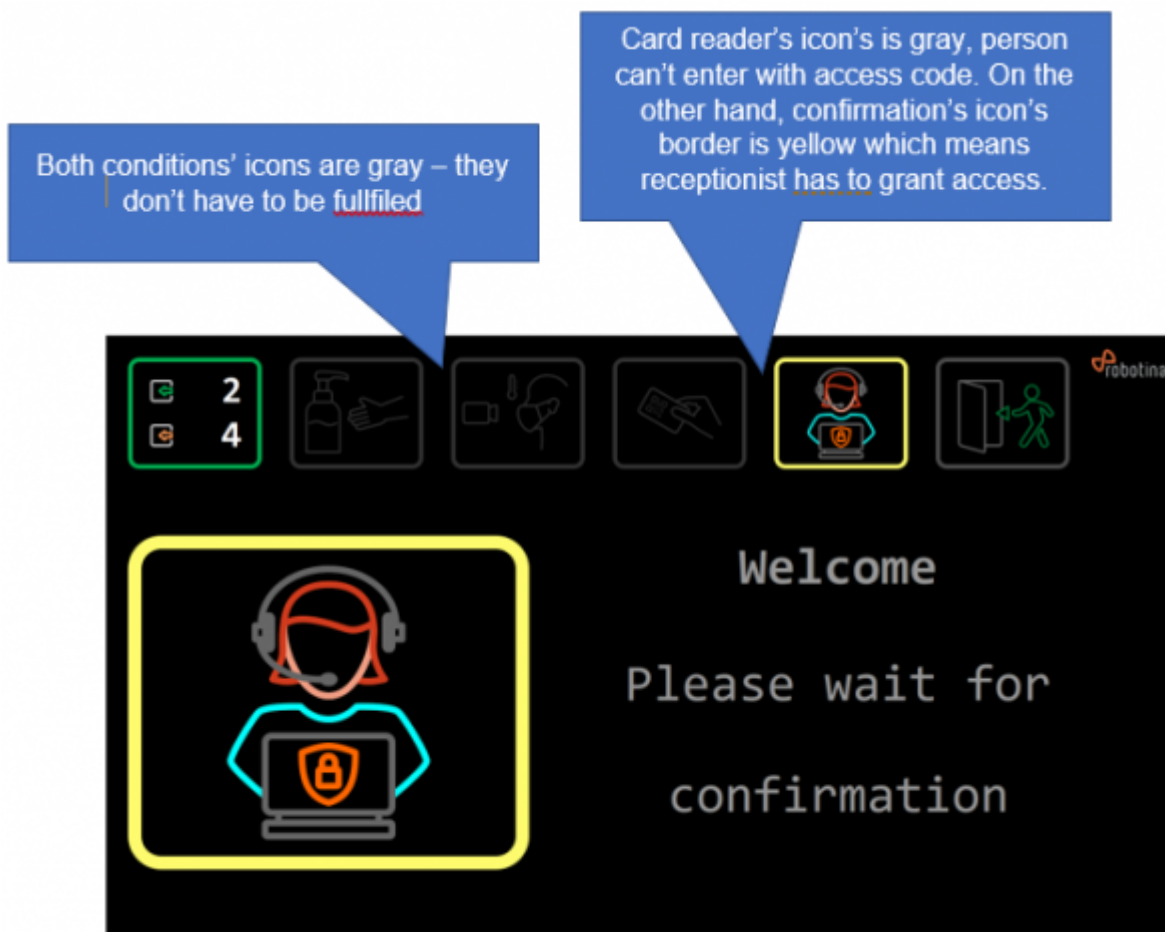
This is the icon that is shown if the required condition is for person to scan his face for mask and to measure temperature. Icon's border is yellow which means it's required. Text is set to "Please look at thermal scanner".



This is the icon that is shown if the required condition is to scan the access code. Icon's border is yellow which means it's required. The text is set to "Scan access code to enter".



This is the icon that is shown if the receptionist's confirmation is required to enter. Icon's border is yellow which means it's required. The text is set to: "Please wait for confirmation."



This is the icon that is shown if the person is allowed to enter. Icon's border changes to green which means everything is okay and you're cleared to enter. The text is set to: "Please enter".



Entering procedure

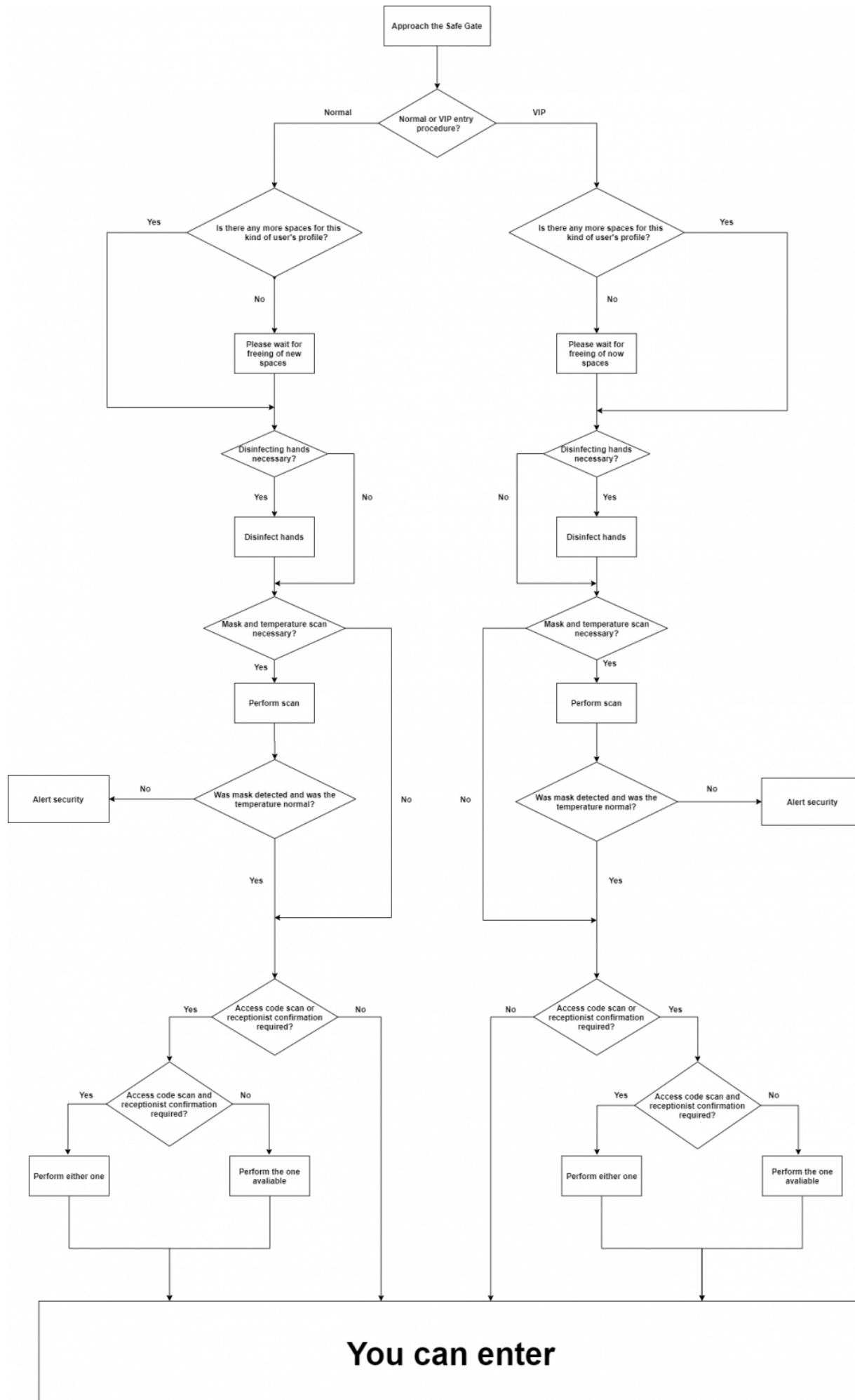
When the person approaches the safe gate, presence sensor is triggered. LED and graphical display show required conditions to enter.

Firstly, the hand sanitizer should be applied and face scan performed, if necessary. Face scanner checks if the person is wearing a mask and if his body temperature is normal. Then one of two steps is required to enter. Person must scan its card, to determine its user profile and if it had completed all of the necessary steps for that profile. Alternate option is that receptionist opens the door. After completing the necessary steps, button for allowing **normal** and/or **VIP** profile become enabled, receptionist then confirms person's profile and it can enter.

Next to the door is a semaphore. If the red light is on, that means you didn't complete all of the required conditions to enter. If, along with red light, alarm starts beeping too, the person must leave the building immediately. This happens for example if fever is detected. When the green light on the semaphore turns on, the person is clear to enter.

It's possible that the limit of people is reached. If that happens, person can't enter the building even if all of the required conditions were completed. First limit is for **normal** profile, person with that profile can't enter after that limit is reached. Second limit is for **VIPs**. After that limit is reached, only **employees** are allowed inside.

There are two allowance types, permission and prevention. If permission is selected, doors are closed until all condition are fulfilled, after which they open. If the prevention is selected, doors are open. If person fails to meet all conditions, doors close.



From:

<http://wiki.hiq-universe.com/> -

Permanent link:

http://wiki.hiq-universe.com/doku.php?id=en:3s:user_manual&rev=1595424370

Last update: **2020/07/22 13:26**

