

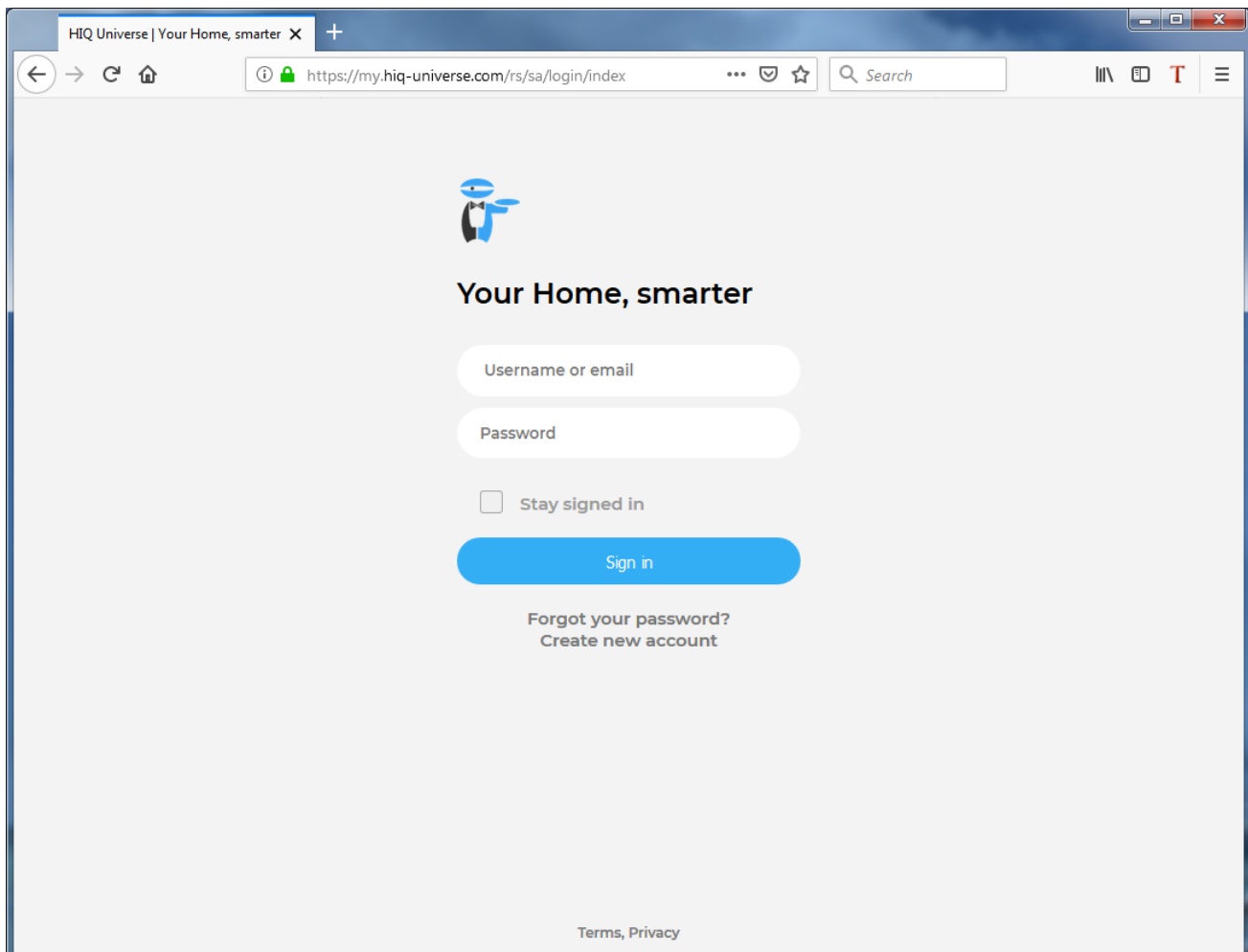
HIQ UNIVERSE

HIQ Universe is a cloud service that enables:

- An overview of current power consumption and
- An overview of the history of electrical power and energy consumption and production.

Access point: <https://my.hiq-universe.com>


HIQ Universe Log-in



HIQ Universe | Your Home, smarter X +

https://my.hiq-universe.com/rs/sa/login/index

Search



Your Home, smarter

Username or email

Password

Stay signed in

Sign in

[Forgot your password?](#)
[Create new account](#)

[Terms, Privacy](#)

Log in with your username or email and password to see your [HIQ Universe subscription dashboard](#).

To reset forgotten password click on "[Forgot your password?](#)"

To create new account click on "[Create new account](#)".

Create HIQ Universe account



In the appropriate fields, enter:

- Username
- First and Last name
- E-mail address
- Timezone
- Password

Click on "I'm not a robot"

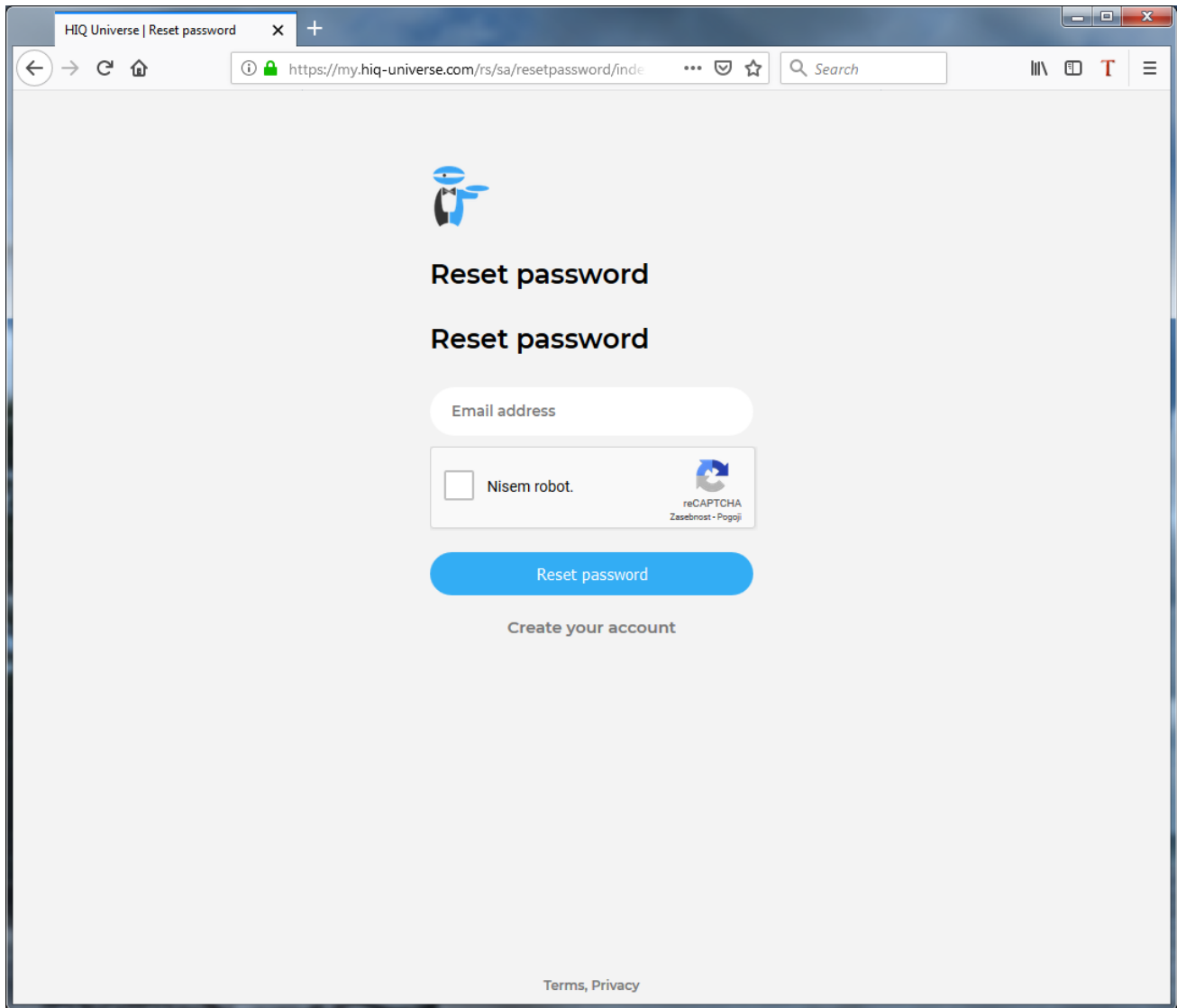
Accept Terms and Conditions

Click on Create account

A confirmation link will be sent to your email address.

Proceed to ["HIQ Universe Log-in"](#) screen.

Reset forgotten password

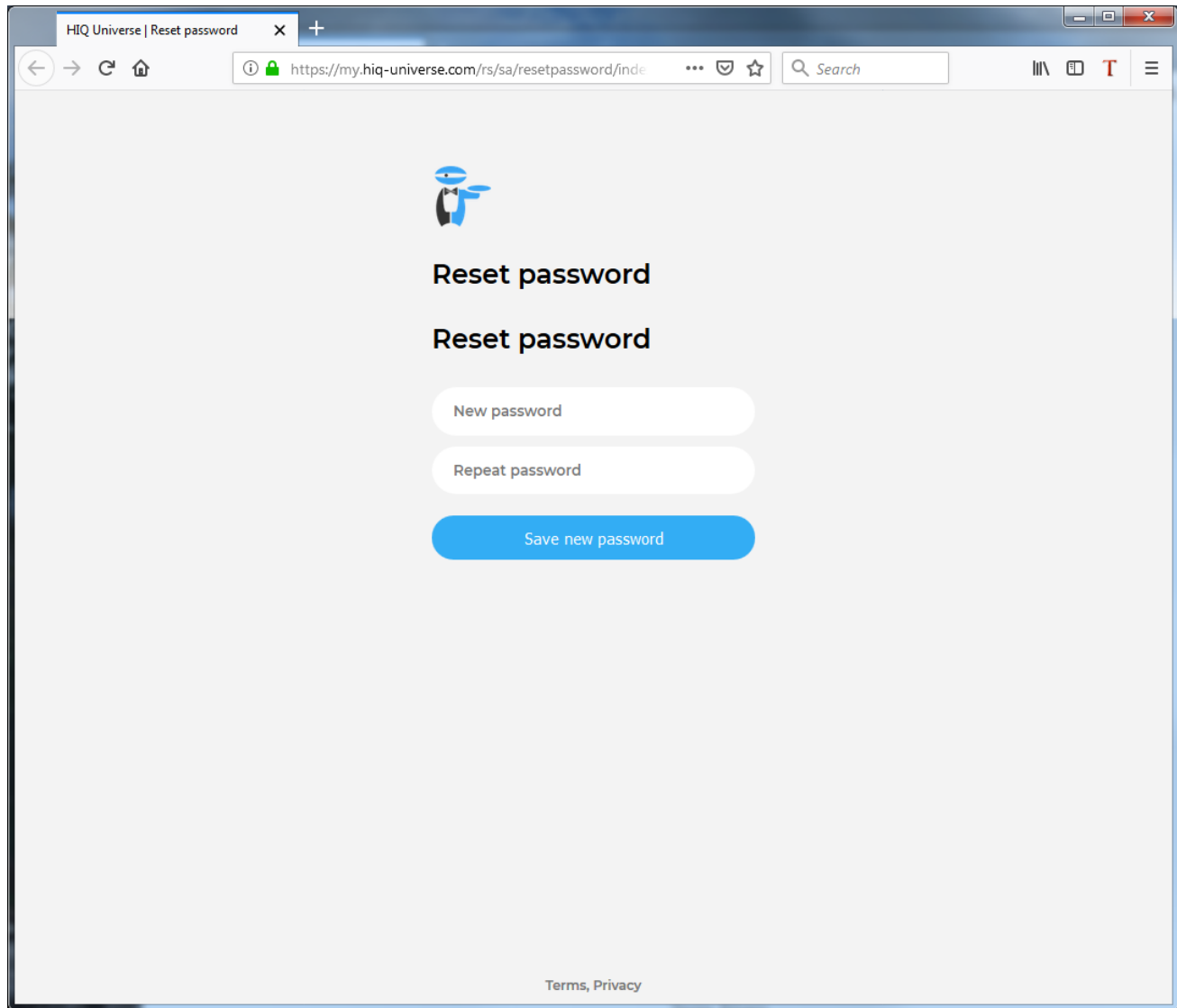


In the appropriate field, enter email address.

Click on "I'm not a robot"

Click on "Reset password".

You will receive email with password reset link.



Enter new password and click on "Save new password".

Proceed to ["HIQ Universe Log-in"](#) screen.

Add HEMS controller



Enter HEMS activation code from “HEMS Quick Set-Up Guide” found in HEMS box.

A screenshot of the HIQ Universe registration form. The form has a blue header with 'HIQ UNIVERSE' and the URL 'https://my.hiq-universe.com'. Below the header are three input fields labeled 'user name', 'email', and 'password'. At the bottom of the form, there is a white box with a black border containing the text 'ACTIVATION CODE' and the code 'SN-0012345A-85212FC25-685D-BEBE'.

HIQ Universe subscription dashboard



You will see tiles for all your subscribed HIQ Universe devices and services.

Go to [Main HEMS view](#) by clicking on HEMS tile or
add [new HEMS device](#) by clicking on blank tile with + sign.

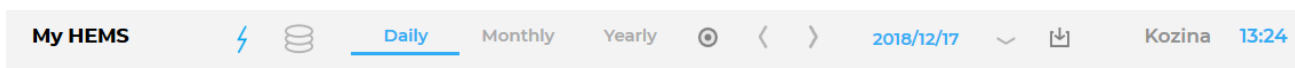
Main HEMS view



Main HEMS page consists of 3 sections:

- "Title and view selection row" at the top
- "Power flow chart" on left side
- "Power and energy time-plot" on right

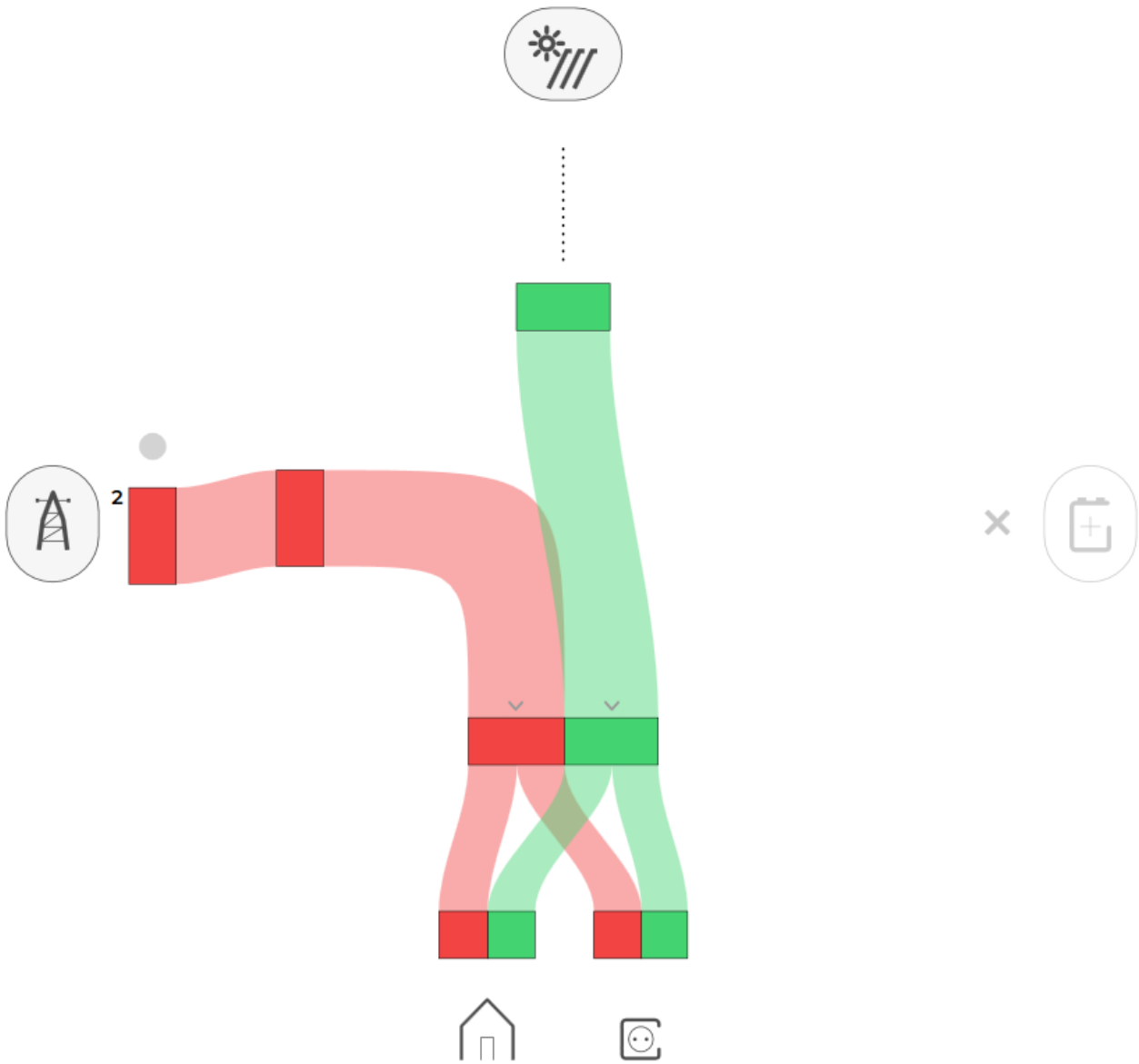
Title and view selection row



...

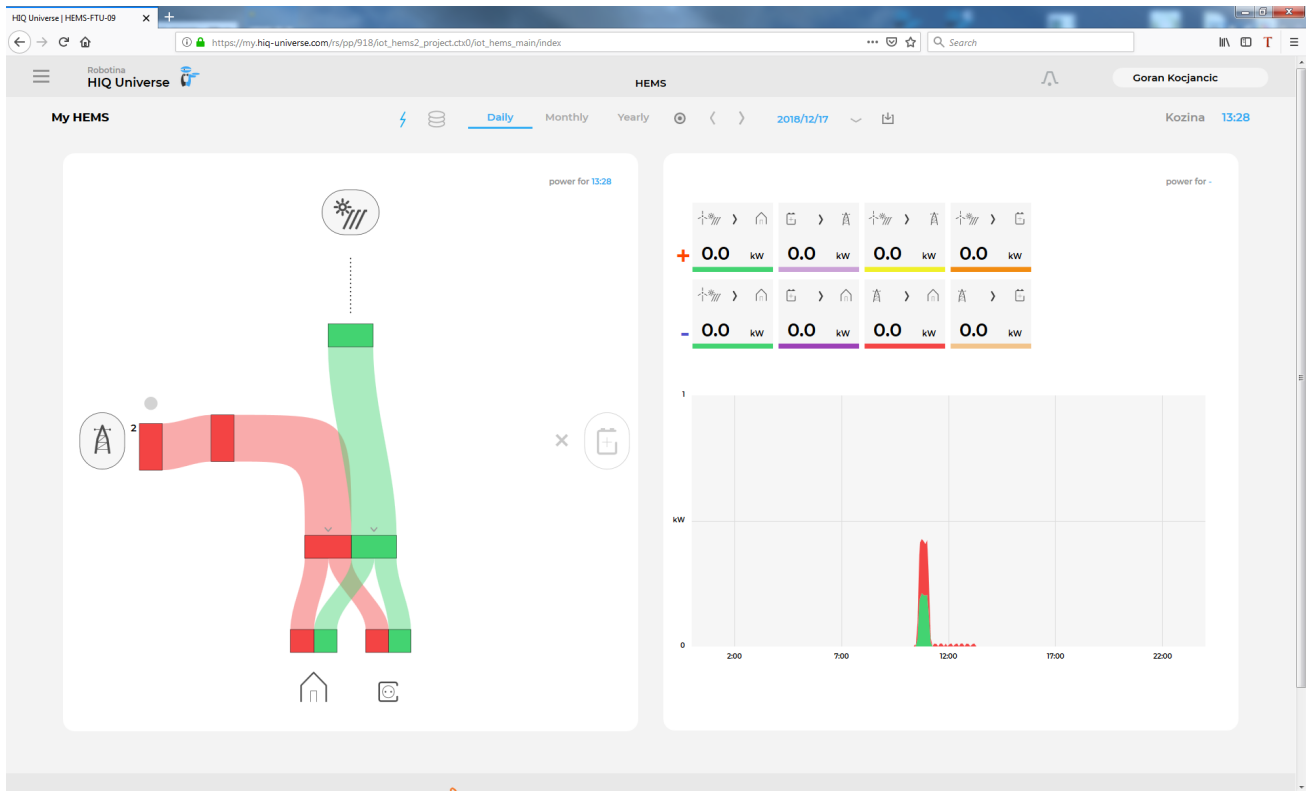
Power flow chart

power for 13:27



...

Power and energy time-plot



...

From:
<http://wiki.hiq-universe.com/> -

Permanent link:
<http://wiki.hiq-universe.com/doku.php?id=en:hems:universe&rev=1545049751>

Last update: **2018/12/17 12:29**

