

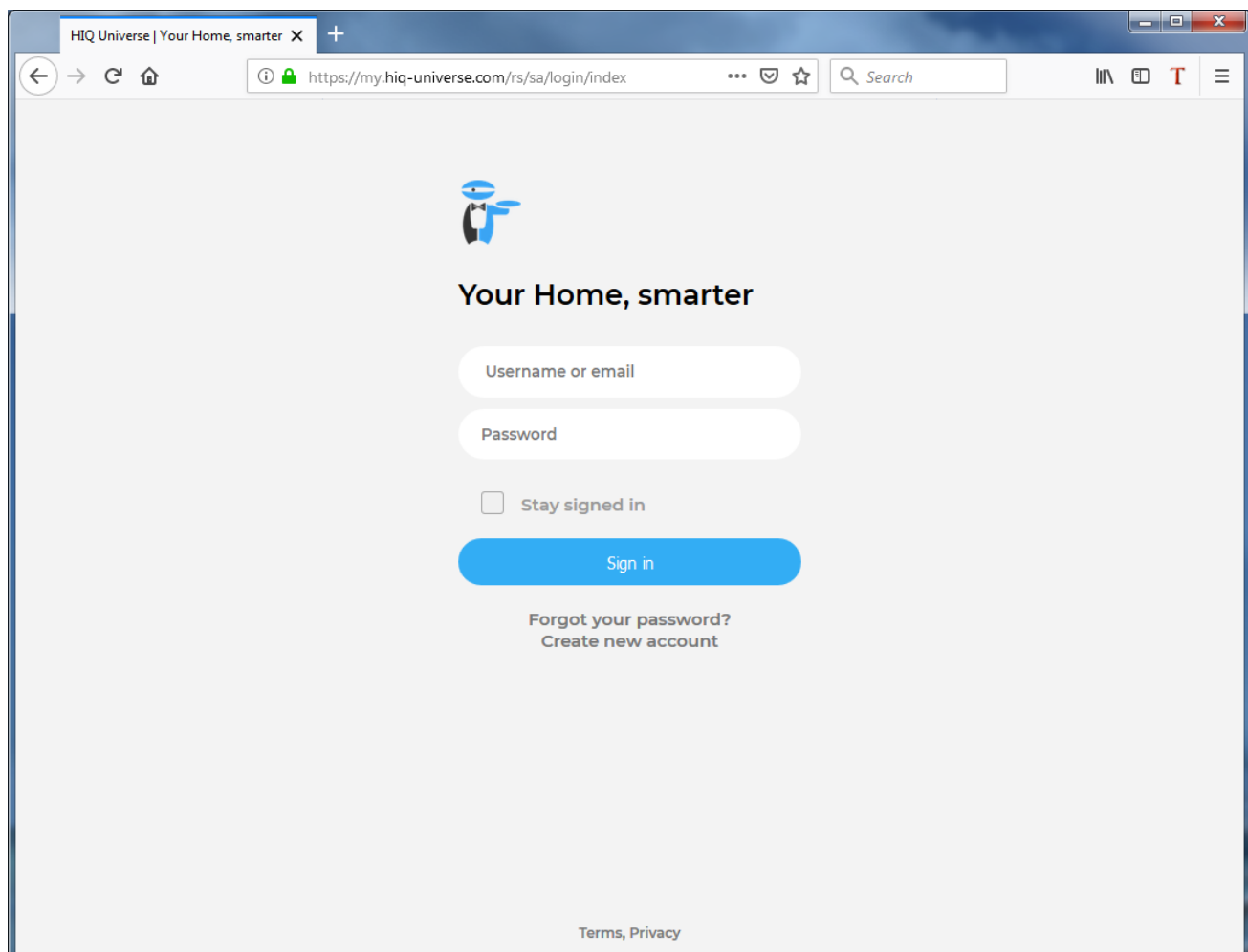
# HIQ UNIVERSE

HIQ Universe is a cloud service that enables:

- An overview of current power consumption and
- An overview of the history of electrical power and energy consumption and production.

Access point: <https://my.hiq-universe.com>

## HIQ Universe Log-in

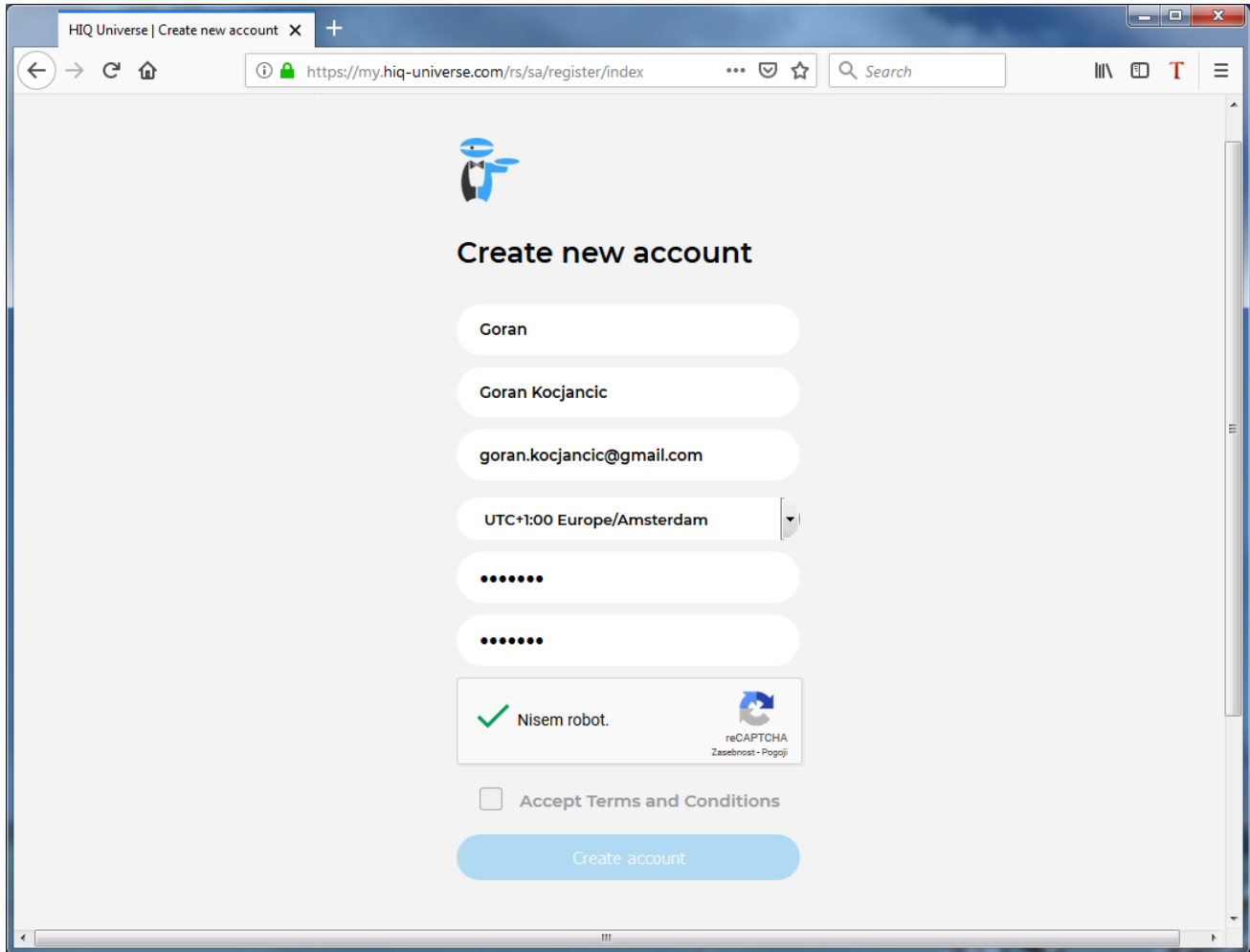


Log in with your username or email and password to see your [HIQ Universe subscription dashboard](#).

To reset forgotten password click on "[Forgot your password?](#)"

To create new account click on "[Create new account](#)".

## Create HIQ Universe account



In the appropriate fields, enter:

- Username
- First and Last name
- E-mail address
- Timezone
- Password

Click on "I'm not a robot"

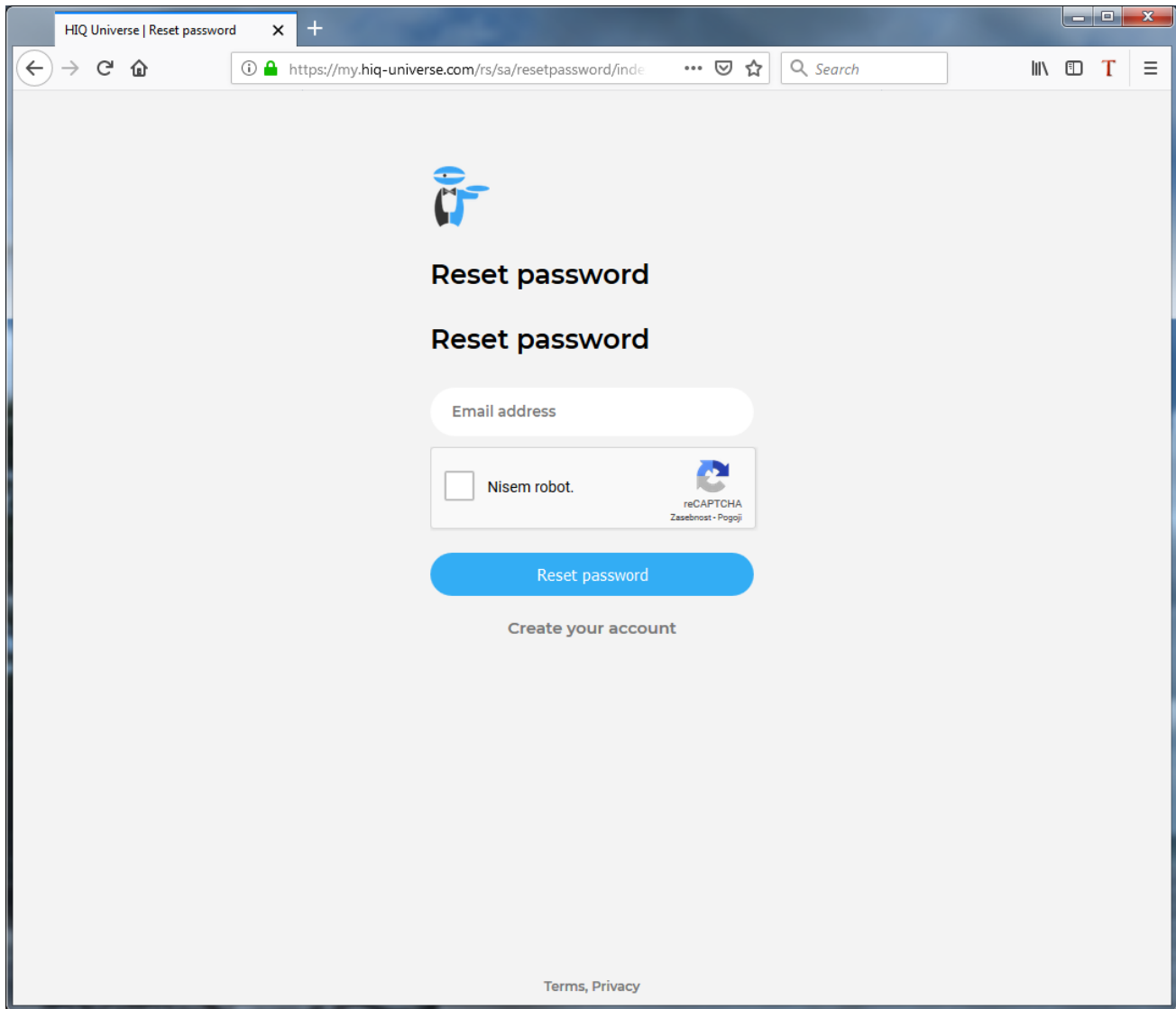
Accept Terms and Conditions

Click on Create account

A confirmation link will be sent to your email address.

Proceed to ["HIQ Universe Log-in"](#) screen.

## Reset forgotten password



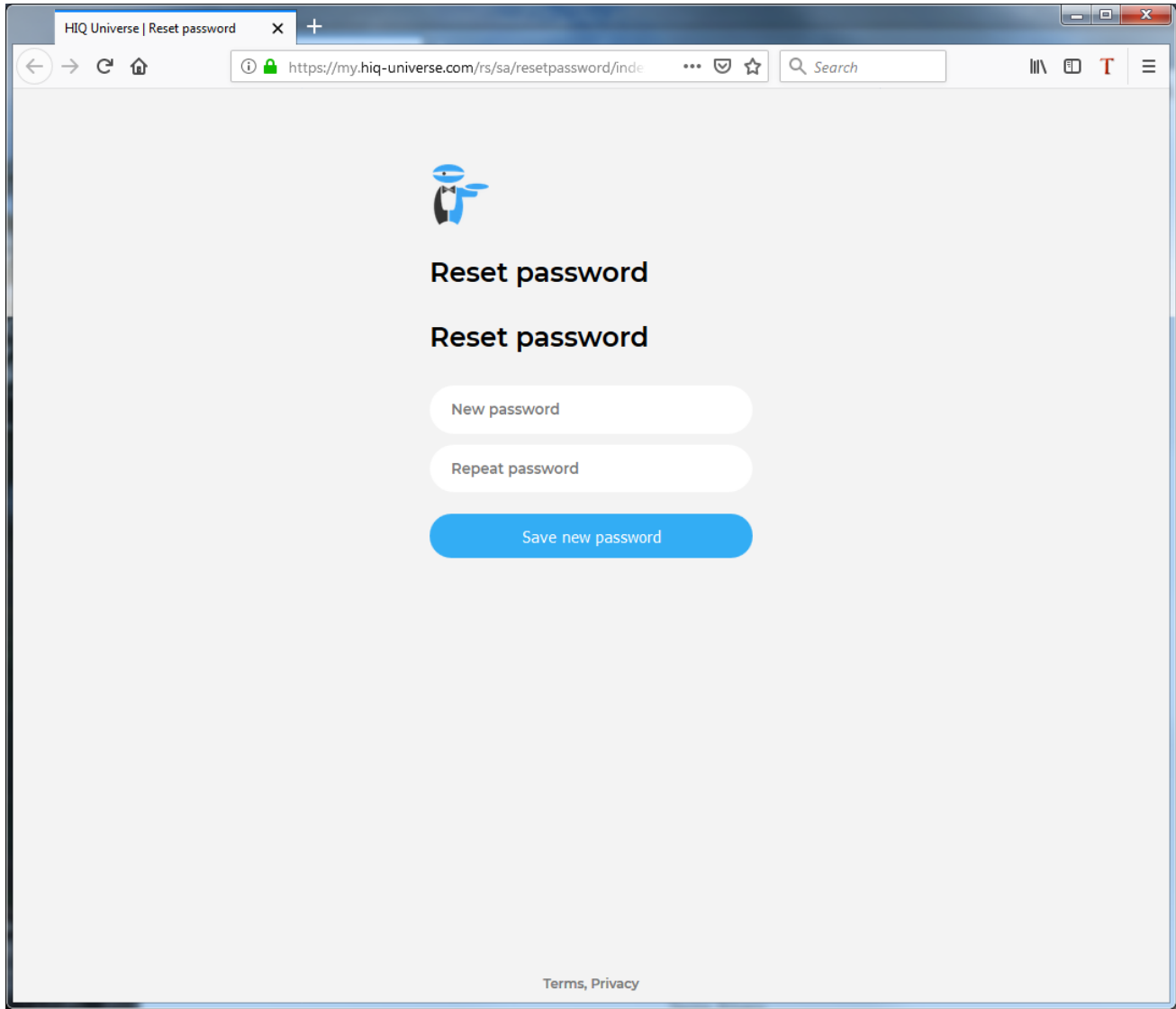
The screenshot shows a web browser window with the title "HIQ Universe | Reset password". The address bar displays the URL "https://my.hiq-universe.com/rs/sa/resetpassword/inde". The page content includes a blue robot icon, the heading "Reset password", a text input field labeled "Email address", a checkbox labeled "Nisem robot." with a reCAPTCHA logo and the text "reCAPTCHA Zasebnost - Pogoj", a blue "Reset password" button, and a link "Create your account". At the bottom, there is a link for "Terms, Privacy".

In the appropriate field, enter email address.

Click on "I'm not a robot"

Click on "Reset password".

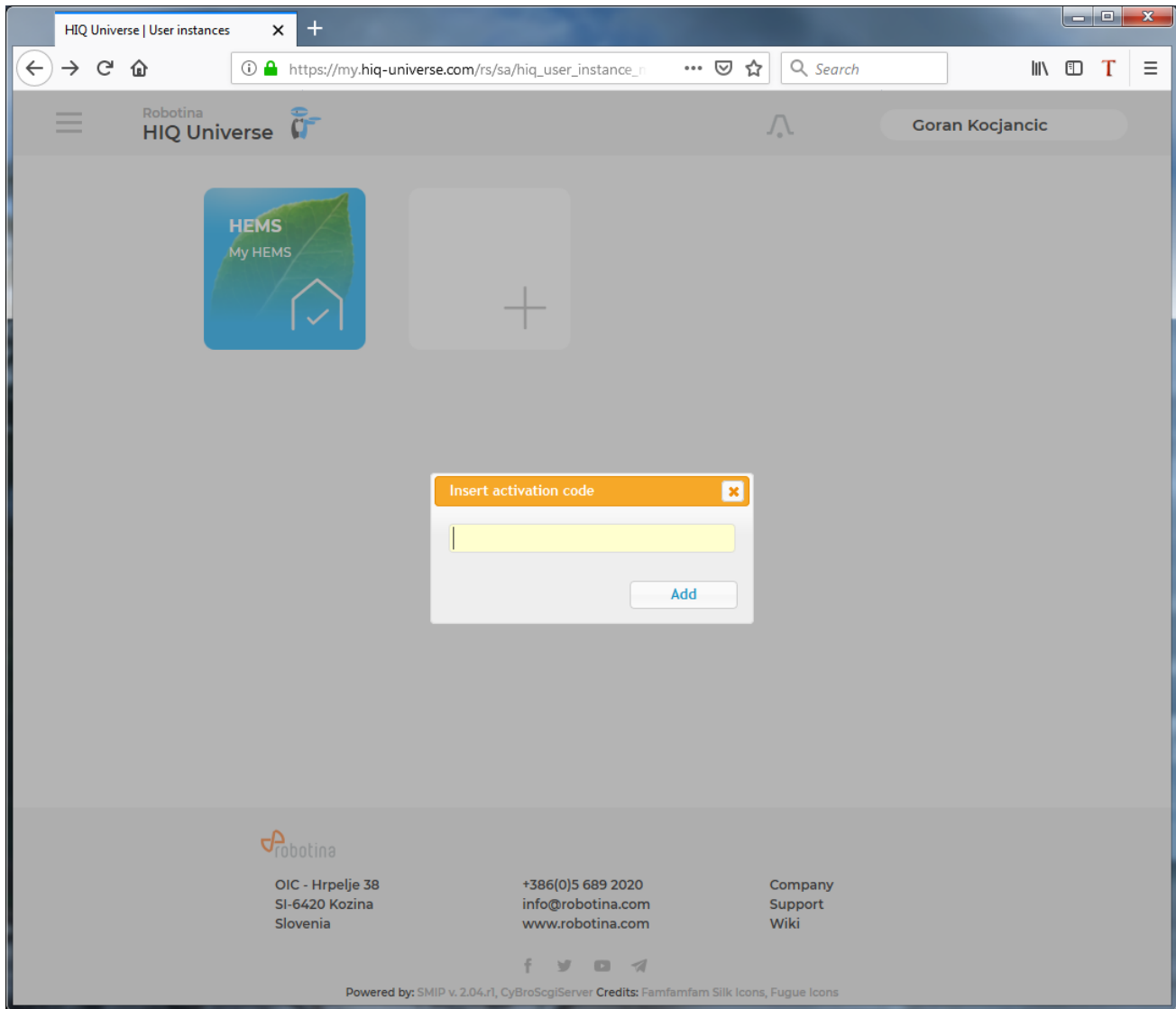
You will receive email with password reset link.



Enter new password and click on "Save new password".

Proceed to ["HIQ Universe Log-in"](#) screen.

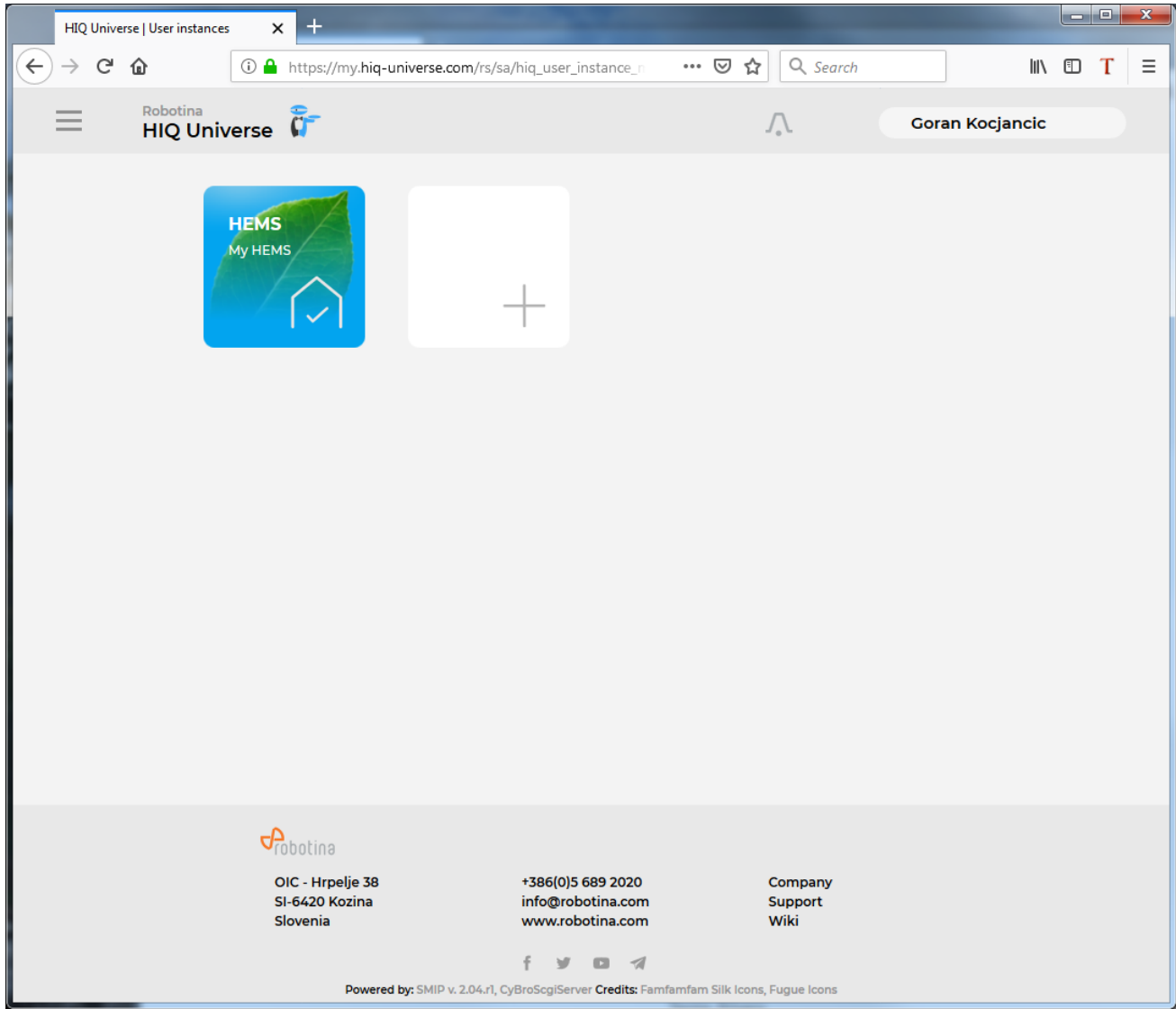
## Add HEMS controller



Enter HEMS activation code from “HEMS Quick Set-Up Guide” found in HEMS box.



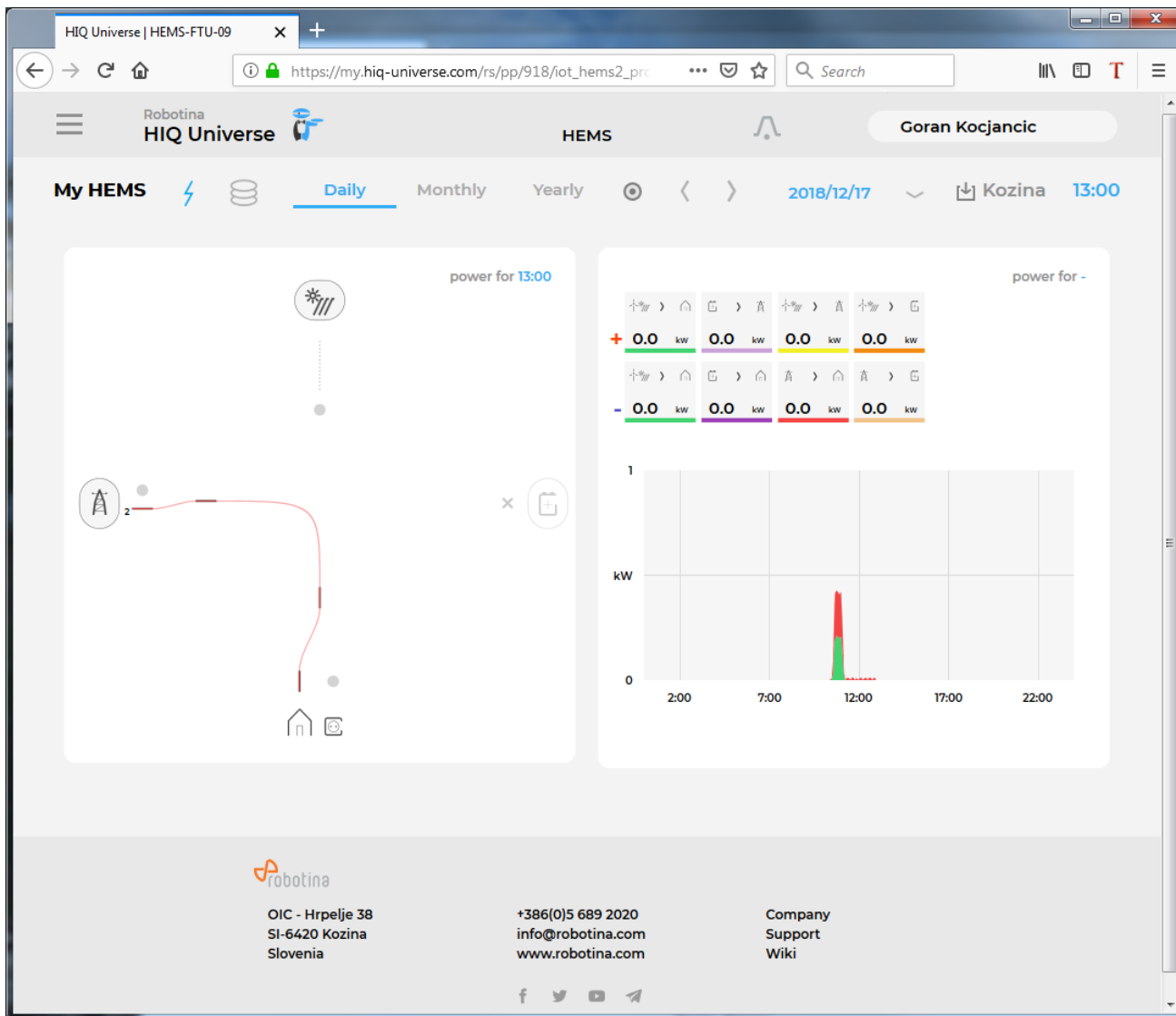
## HIQ Universe subscription dashboard



You will see tiles for all your subscribed HIQ Universe devices and services.

Go to [Main HEMS view](#) by clicking on HEMS tile or  
add [new HEMS device](#) by clicking on blank tile with + sign.

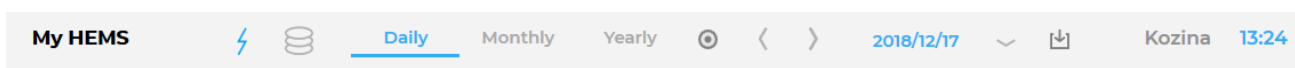
### Main HEMS view



Main HEMS page consists of 3 sections:

- "Title and view selection row" at the top
- "Power flow chart" on left side
- "Power and energy time-plot" on right

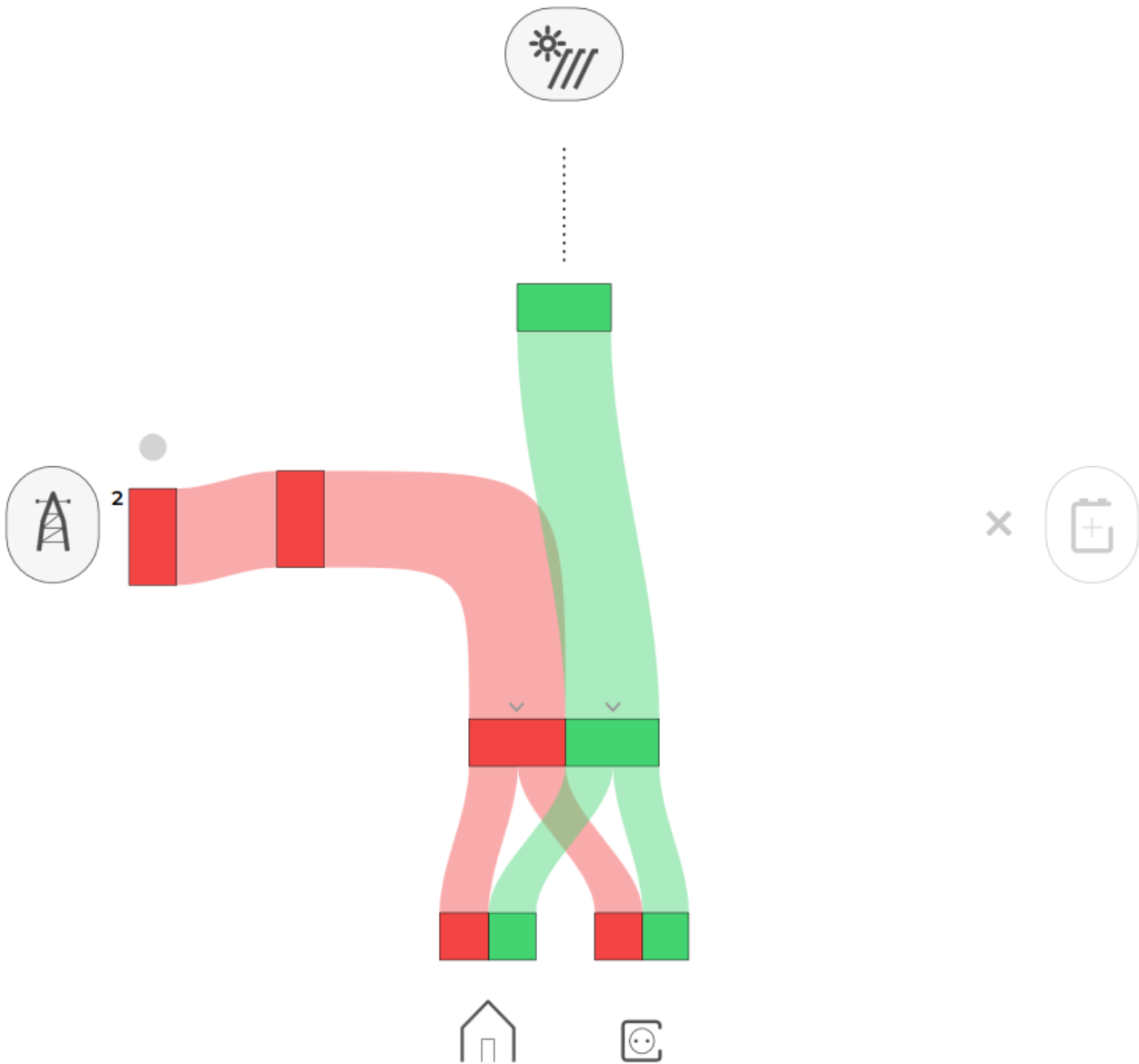
**Title and view selection row**



...

**Power flow chart**

power for 13:27

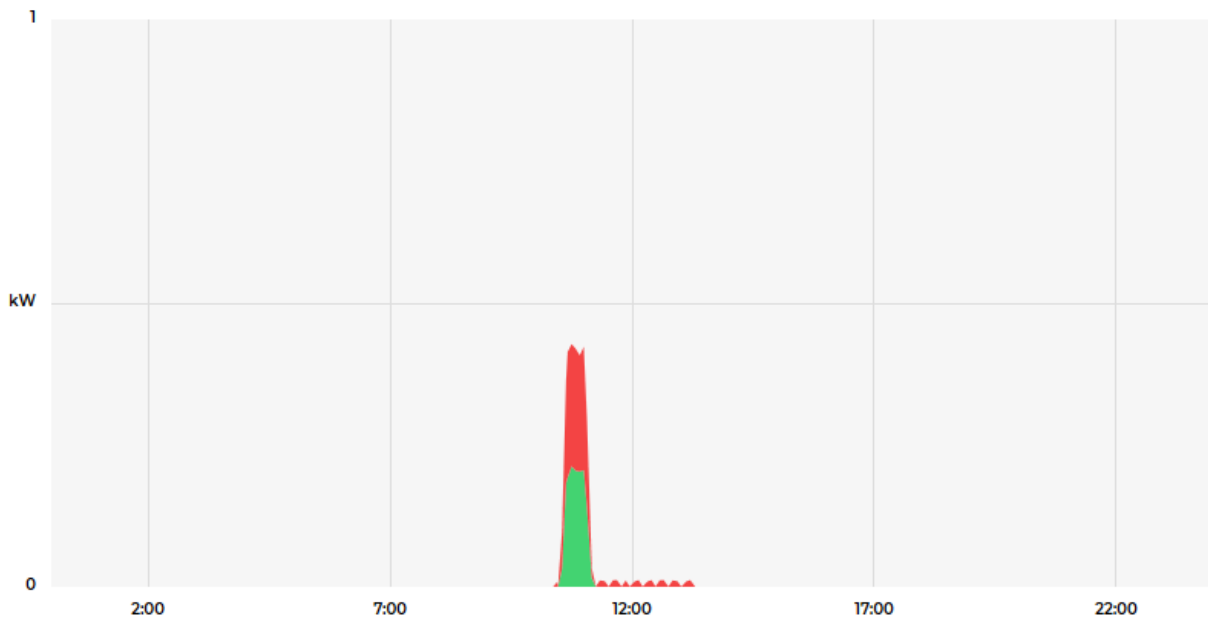


...

### Power and energy time-plot



power for -



...

From:  
<https://wiki.hiq-universe.com/> -

Permanent link:  
<https://wiki.hiq-universe.com/doku.php?id=en:hems:universe&rev=1545049782>

Last update: **2018/12/17 12:29**

