

Commissioning

1. Inspect wiring

Check all wires and connections. Overvoltage on inputs or short circuit on outputs will destroy your HIQ device(s). Bad connections will cause unreliable operation and overheating.

2. HIQ power up

Power up the whole system.
Light on/off and dimmer push buttons should already work.

3. HIQ Configuration and firmware update

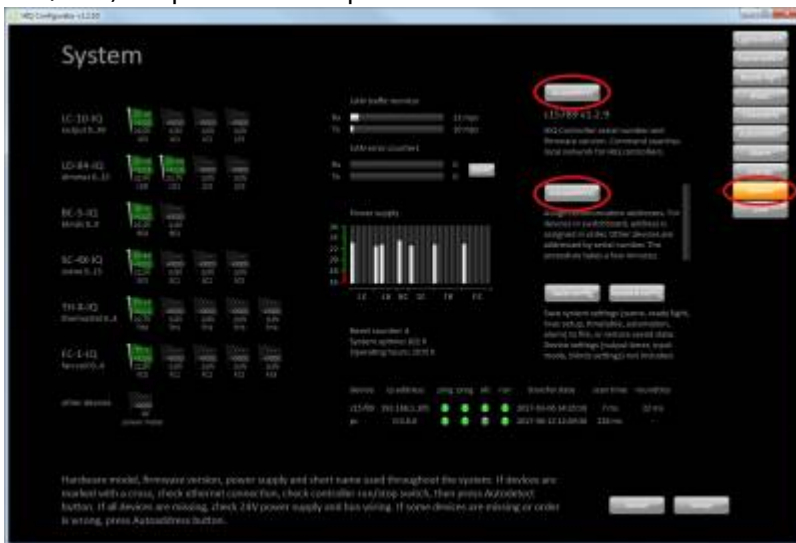
Install [HIQ Configurator](#).

Autodetect

To switch from controller to controller use Autodetect function.



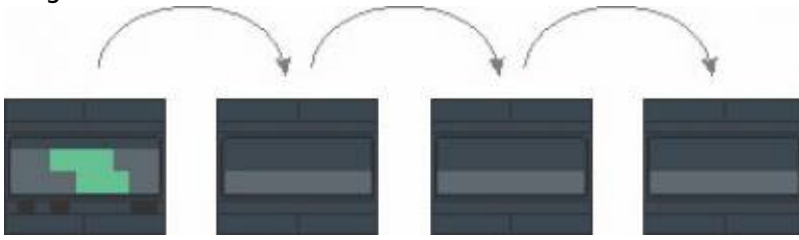
On "System" page press "Autodetect" button to detect and then select your Home controller (HC). If there are many controllers you have to choose appropriate NAD number (written on the top or side of HC / MC). Repeat next steps for all controllers.



According to the different configurations of hardware and software on your computer it can happen that Autodetect fails. In this case "Enter NAD manually".

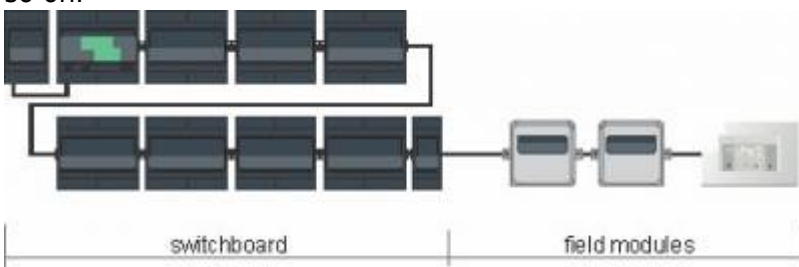
Autoaddress

To get all modules in order use Autoaddress function.



Devices inside switchboard are addressed sequentially, from left to right. Devices outside of switchboard (field modules) are addressed in order of ascending serial numbers - lowest serial number gets the first address, second lowest the second and so on.

Note that **thermostat** with lowest serial number controls **FC controller** with lowest serial number and so on.



Manual address:

If we have system with non-standard layout, then Autoaddress will not work (correctly) and we have to make **manual address**.

FW update

When (auto)address is finished we check if all the modules have the latest firmware installed. We check installed firmware versions on the "System" page.

DC device type is circled in red, DC version in blue and HC version in green:



We compare our firmware versions with the table below:

Name	Code	Last firmware version	Compatible hardware
Home Controller			

Home controller	HC-IQ	v1.2.16	CyBro-2
	Cybro-3	v6.1.5a	CyBro-3
	MC-xx-xx		MC
Device Controllers			
Light controller	LC-10-IQ	v3207	Bio-20R v1.1
LED stripe dimmer	LD-V4-IQ	v3303	v1.0
		v3307	v1.1, v1.2
Light dimmers driver	LD-P4-IQ	v3023	v1.0, v1.1
DALI dimmer	LD-D8-IQ	v3215	LC-DC v1.1
Blinds controller	BC-5-IQ	v3210	Bio-20R v1.1
Scene touch panel	SC-4T-IQ	v3403	SC-4T v1.0, v1.1
Scene controller	SC-4S-IQ		SW-W3 v1.0
Thermostat	TH-1M-IQ	v3215-hw12	OP-6 v1.1, v1.2
		v3215-hw14	OP-6 v1.4
	TH-1T-IQ	v3215-hw14	OP-6T v1.1
	TH-2-IQ	v3011	TS-H v3.0, v3.1
Thermostat & scene controller	TH-3-IQ	v3006	OP-5 v1.5
HVAC controller	FC-1-IQ	v3206-hw23	FC v2.3
		v3206-hw24	FC v2.4
ALL		ALL	

If needed we make [firmware update](#) and run "Autoaddress" again.

HIQ-DC configuration

For HIQ-DC configuration we follow all steps in [HIQ Configurator](#).

4. Connect to the internet

Connect to [HIQ Universe](#).

5. Save configuration

We save configuration and restore it later if there are any unwanted changes.



6. HIQ Commander setup

Proceed with [HIQ Commander setup](#).

From: <http://wiki.hiq-universe.com/> -

Permanent link: http://wiki.hiq-universe.com/doku.php?id=en:hiq_home:methods:commissioning&rev=1666010357

Last update: 2022/10/17 12:39

