

# Wireless gateway

## Wireless gateway



Model number:	<b>GW-WN-W</b>
Mounting:	field, on wall
Dimensions:	92 × 110(300) × 35 mm
<b>Used for wireless communication with:</b>	
Wireless bridge	<a href="#">BR-WN-W</a>
Wireless load managers	<a href="#">SC1-WN-F</a>
	<a href="#">RL1-WN-W</a>
	<a href="#">PM1-WN-D</a>
	<a href="#">PM1-WN-W</a>
<b>Require:</b>	
Serial converter	<a href="#">CAD-232-A2-IQ</a>

## General description

Wireless gateway purpose is to interface between the HEMS controller and wireless devices.

The device is supplied from external supply (12-24 VDC/VAC); its role in the network is Coordinator, i.e. it forms an active part of creating the network and maintaining wireless traffic from and to other wireless devices.

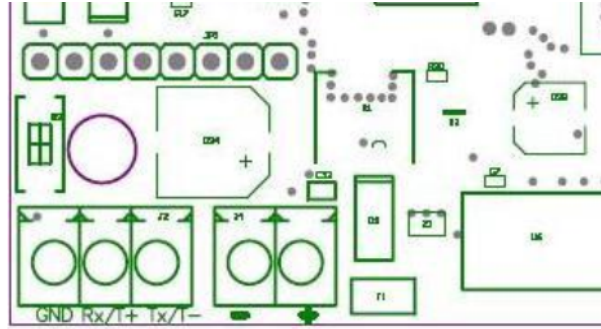
## Technical specification

Power supply	12 - 24 VDC, 100 mA
	12 - 24 VAC, 50 / 60 Hz, 2,4 VA
Wireless characteristics	2405 - 2480 MHz
	DSSS modulation
	Nominal transmission Power 0 dBm
	IEEE 802.15.4 compliant
	Stack EmberZNet3.5.x
	Stack version 0
	Proprietary profile ID
Proprietary encryption key	
Protection	IP55

## Terminals

<b>GW-WN-W</b>	<b>Power supply</b>
+	+

GW-WN-W	Power supply
-	-
GW-WN-W	CAD-232-A2-IQ
GND	C
Rx/T+	A
Tx/T-	B



From:  
<http://wiki.hiq-universe.com/> -

Permanent link:  
[http://wiki.hiq-universe.com/doku.php?id=en:hiq\\_hw:gw-wn-w&rev=1565779793](http://wiki.hiq-universe.com/doku.php?id=en:hiq_hw:gw-wn-w&rev=1565779793)

Last update: **2019/08/14 10:49**

