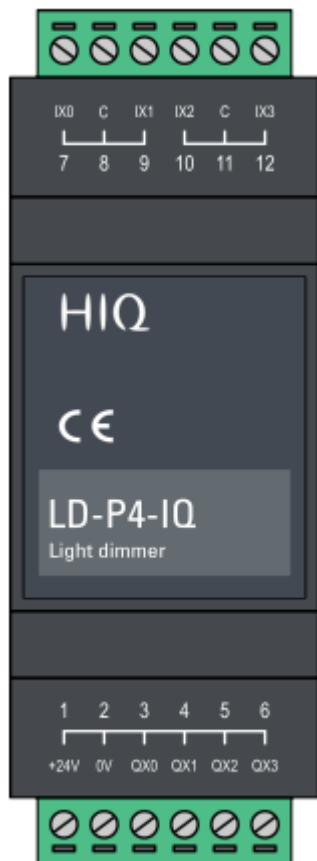


Light dimmers driver

4 channel driver for universal lights dimmers



Model number:	LD-P4-IQ
Mounting:	DIN rail, 2M / 35 mm
Dimensions:	36×108×58mm

Applications

- 4 individual 230 VAC dimmable lights

Features

- button or potentiometer input
 - auto-detect input type
 - potentiometer auto-range
- External [LUD-12](#) power drivers with:
 - Automatic load detection (L or C loads)
 - Electronic overload protection
 - Over-temperature shutdown

General description

The universal lights dimmer LD-P4-HIQ is 4 channels controller for [LUD-12](#) universal light dimmers. LD-P4-HIQ supports local control buttons or potentiometers connected directly to it, which can be mixed and are auto-detected.

Many features are available in the stand alone mode, while advanced features like scenes,

scheduling, smartphone operation, internet connection are only available when connected to the appropriate Home Controller.

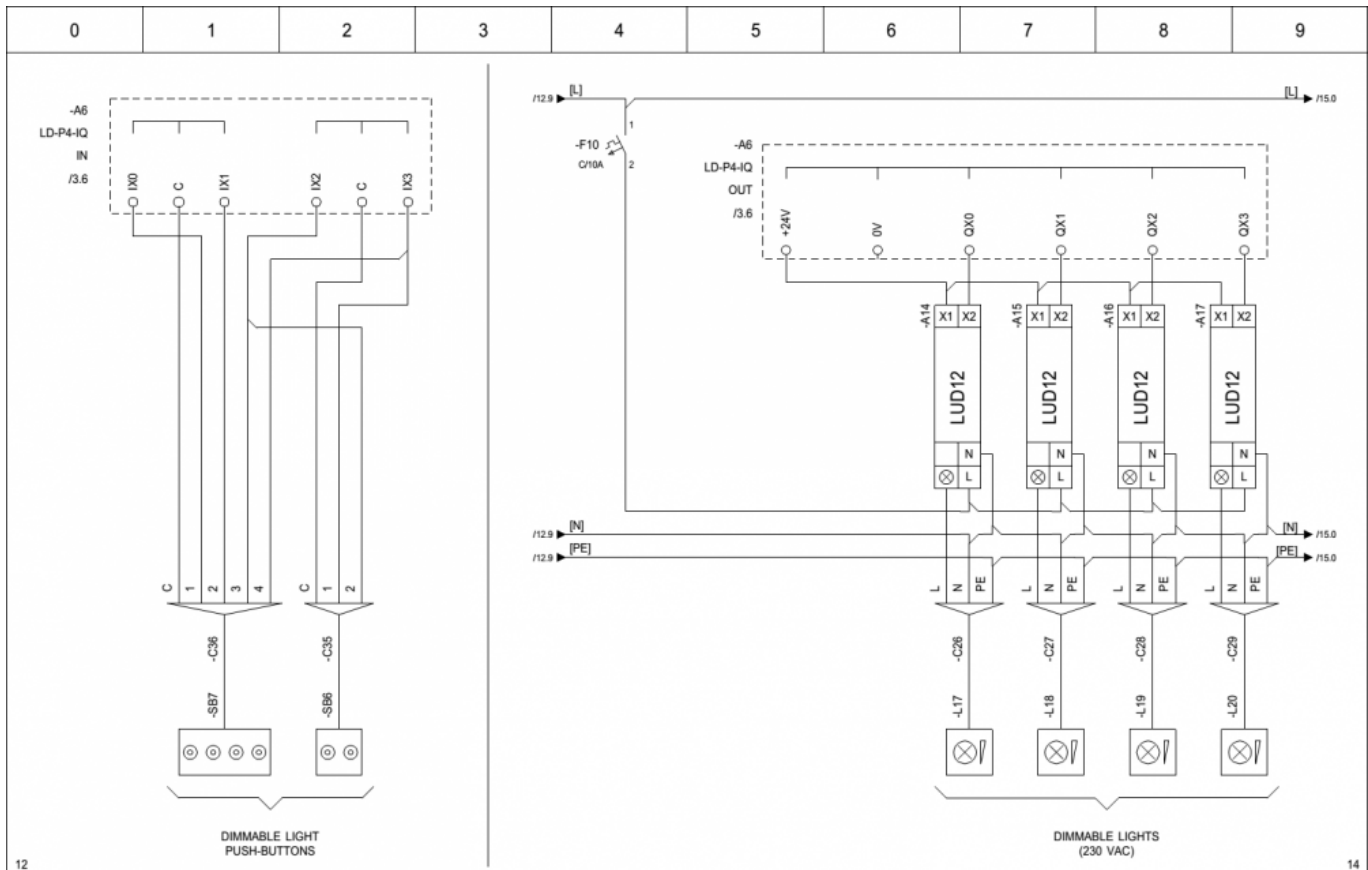
LUD-12 universal dimmer can be used for any type of dimmable 230 VAC lights. It automatically detects load type (L loads and C loads). Dimmer is electronically protected against overload and over-temperature.

Technical specification

Analog inputs:	10k / 1-10 V; auto-range
Digital inputs:	internal pull-up, 12V, 2mA
PWM output:	
Power supply:	24V/25mA
Ingress protection:	IP20
Operating temperature:	0..45°C
Storage temperature:	-20..75°C
Relative humidity:	0..95% n/c

Terminals

Power supply / Drivers common (X1)	+24V	1	Power supply	Digital input 0	7	IX0	Light 0 push-button
Power supply	0V	2		Inputs common	8	C	Push-buttons common
Driver 0 PWM input (X2)	QX0	3	PWM output 0	Digital input 1	9	IX1	Light 1 push-button
Driver 1 PWM input (X2)	QX1	4	PWM output 1	Digital input 2	10	IX2	Light 2 push-button
Driver 2 PWM input (X2)	QX2	5	PWM output 2	Inputs common	11	C	Push-buttons common
Driver 3 PWM input (X2)	QX3	6	PWM output 3	Digital input 3	12	IX3	Light 3 push-button



			Last changed by GK Last changed 14/9/2015 File name 14/9/2015		Robotina d.o.o. OIC Kozina 38 SI-6240 Kozina	HC-IQ Automation LD-P4-IQ Inputs / Outputs HIQ wiring		Drawing number 001 Pages 17		Installation = Location + Page number 13	
Rev	Revision text	Signature	Date	14/9/2015							

From:
<https://wiki.hiq-universe.com/> -

Permanent link:
https://wiki.hiq-universe.com/doku.php?id=en:hiq_hw:ld-p4-iq

Last update: **2020/06/03 07:25**

