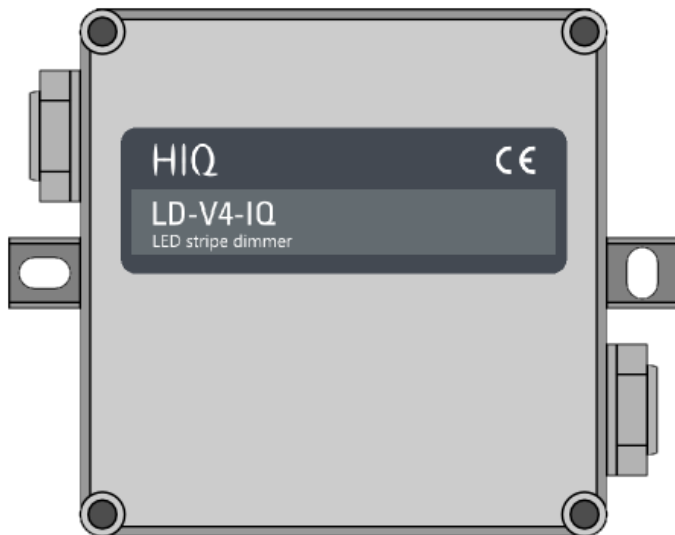


# LED stripe dimmer

## 4 channel 12/24V constant voltage PWM dimmer



|               |                                    |
|---------------|------------------------------------|
| Model number: | <b>LD-V4-IQ</b>                    |
| Mounting:     | in-field, junction box or dry-wall |
| Dimensions:   | 108×86×45.5mm                      |

## Applications

- 4 individual single color LED stripes
- RGB+W LED stripe

## Features

- button or potentiometer input
  - auto-detect input type
  - potentiometer auto-range
  - Brightness/saturation/hue control in RGB mode
- RGB mode
- exponential output control
- high frequency PWM operation
- channel phase spreading
- full output protection

## General description

The LED dimmer LD-V4-HIQ is 4 channels PWM dimming controller for voltage controlled LED lights or ribbons. It can be used for 4 individual LED stripes or for RGB (+W) stripe. LD-V4-HIQ supports local control buttons or potentiometers connected directly to it, which can be mixed and are auto-detected. For more natural feel and smoother transitions outputs are exponentially controlled with resolution of 0,025 %. High PWM frequency (500 Hz) and channels spreading prevent flickering, reduces EMI noise and considerably increase power efficiency, while preventing eye-strain or headache.

All outputs are fully protected against over-voltage, under-voltage and over-current. Many features are available in the stand alone mode, while advanced features like scenes, scheduling, smartphone operation, internet connection are only available when connected to the appropriate Home Controller.

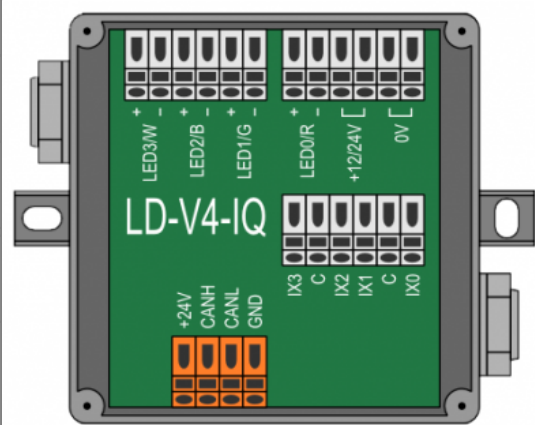
## Technical specification

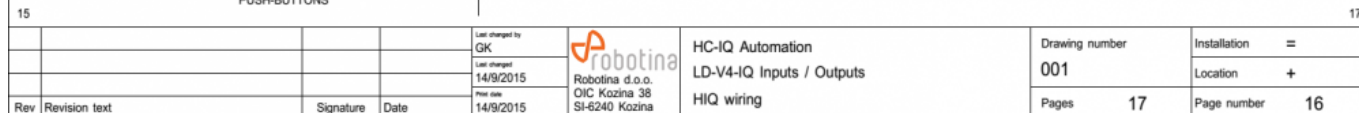
|                           |                             |
|---------------------------|-----------------------------|
| Total output power        | 240 W @ 12 V                |
|                           | 480 W @ 24 V                |
| Total power loss:         | 2 W @ 3×6,7 A               |
| Max current per terminal: | 10 A                        |
| PWM frequency:            | 500 Hz                      |
| Output resolution:        | 12-bit                      |
| Digital inputs:           | internal pull-up 12 V, 2 mA |
| Analog inputs:            | 10k / 1-10 V; auto-range    |
| Potentiometer inputs:     | 10 k                        |
| LED power supply:         | 12 / 24 V (10..28 V)        |
| Power supply:             | 24 V / 25 mA                |
| Operating temperature:    | 0..45 °C                    |
| Storage temperature:      | -20..75 °C                  |
| Relative humidity:        | 0..95 % n/c                 |
| Galvanic separation:      | supply/outputs              |

| Maximum current |        |
|-----------------|--------|
| Output          | Supply |
| 1x10A           | 1x10A  |
| 2x10A           | 2x10A  |
| 3×6.7A          | 2x10A  |
| 4x5A            | 2x10A  |

Terminals

|                                 |         |        |                                 |
|---------------------------------|---------|--------|---------------------------------|
| LED stripe 3 / White RGB stripe | LED3/W  | +<br>- | LED 3 / W PWM<br>output         |
| LED stripe 2 / Blue RGB stripe  | LED2/B  | +<br>- | LED 2 / B PWM<br>output         |
| LED stripe 1 / Green RGB stripe | LED1/G  | +<br>- | LED 1 / G PWM<br>output         |
| LED stripe 0 / Red RGB stripe   | LED0/R  | +<br>- | LED 0 / R PWM<br>output         |
| LED power supply                | +12/24V | .      | LED PWM outputs<br>power supply |
|                                 | 0V      | .      |                                 |
|                                 |         | .      |                                 |
| LED 3                           | IX3     | +      | Digital/analog input 3          |
| Push-buttons common             | C       | -      | Digital/analog inputs common    |
| LED 2 / RGB saturation button   | IX2     | +      | Digital/analog input 2          |
| LED 1 / RGB color button        | IX1     | +      | Digital/analog input 1          |
| Push-buttons common             | C       | -      | Digital/analog inputs common    |
| LED 0 / RGB brightness button   | IX0     | +      | Digital/analog input 0          |
| IEX2 BUS                        | +24V    | .      | IEX2 bus                        |
|                                 | CANH    | .      |                                 |
|                                 | CANL    | .      |                                 |
|                                 | GND     | .      |                                 |





<http://wiki.hiq-universe.com/> -

[http://wiki.hiq-universe.com/doku.php?id=en:hiq\\_hw:ld-v4-ig](http://wiki.hiq-universe.com/doku.php?id=en:hiq_hw:ld-v4-ig)

