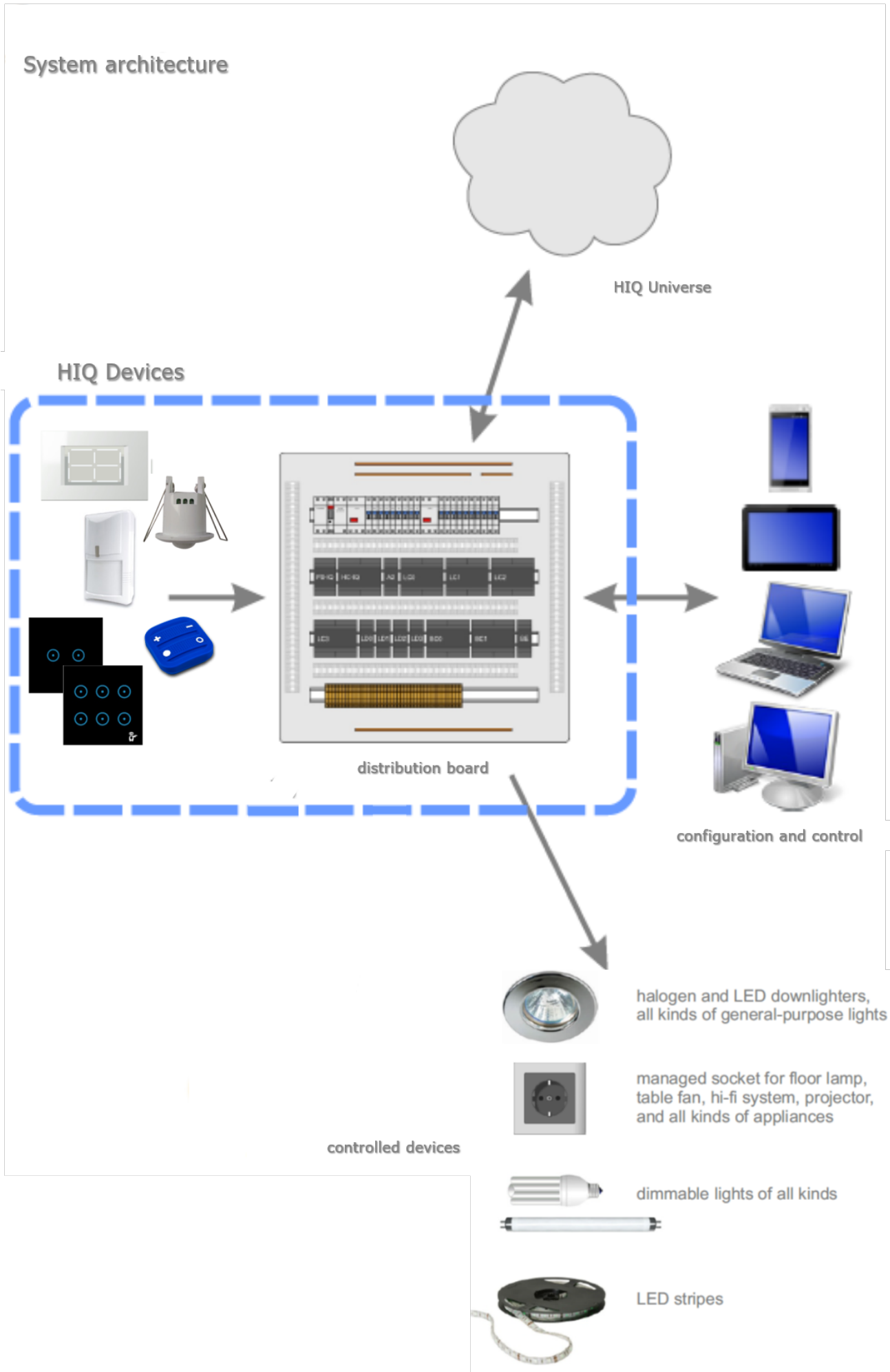


# HIQ Lighting Control - HIQ LCS

HIQ LCS is a system of integrated devices and software for lighting automation. The primary function is control and management of any lights - on/off, dimmable, LED RGB, LED stripes using local wired or wireless push or touch buttons, Wi-Fi tablets, Mobile phones or BMS/SCADA monitoring and control. Lights can be controlled by scenarios, scheduled, by motion sensors using direct relay modules, DALI, DSI or PWM/Triac dimmable and LED stripes. Although the basic concept of HIQ LCS is simple, the possibility to extend current capabilities or add new is unlimited.





Last update: 2020/04/25 14:32 en:ms\_main:hiq\_lighting:concept [http://wiki.hiq-universe.com/doku.php?id=en:ms\\_main:hiq\\_lighting:concept&rev=1587825124](http://wiki.hiq-universe.com/doku.php?id=en:ms_main:hiq_lighting:concept&rev=1587825124)

---

From: <http://wiki.hiq-universe.com/> -

Permanent link: [http://wiki.hiq-universe.com/doku.php?id=en:ms\\_main:hiq\\_lighting:concept&rev=1587825124](http://wiki.hiq-universe.com/doku.php?id=en:ms_main:hiq_lighting:concept&rev=1587825124)

Last update: **2020/04/25 14:32**

