

Wireless touch wall button

Wall glass finish touch button



Model:	LC-WxB-y
Gang number:	x: 1 or 2 or 3
Colour:	y: 01-black, 02-white, 03-gold, C-custom
Connects:	MC via LC-W12
Mounting:	On wall

Applications

- Touch switching
- Wireless control

Features

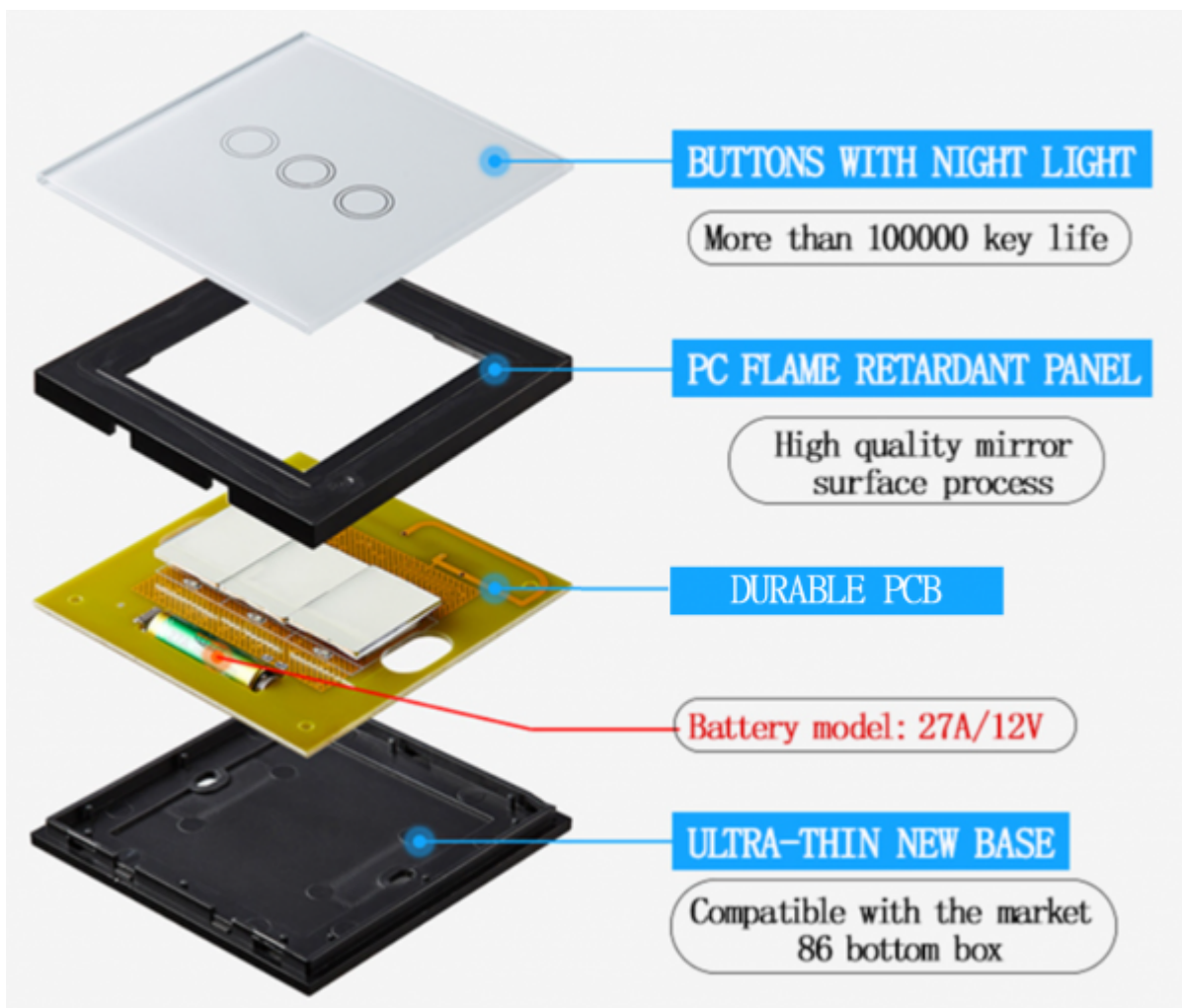
- Aestetical look
- Easy mount
- Pleasant feel

- Scene control - One key to control multiple devices

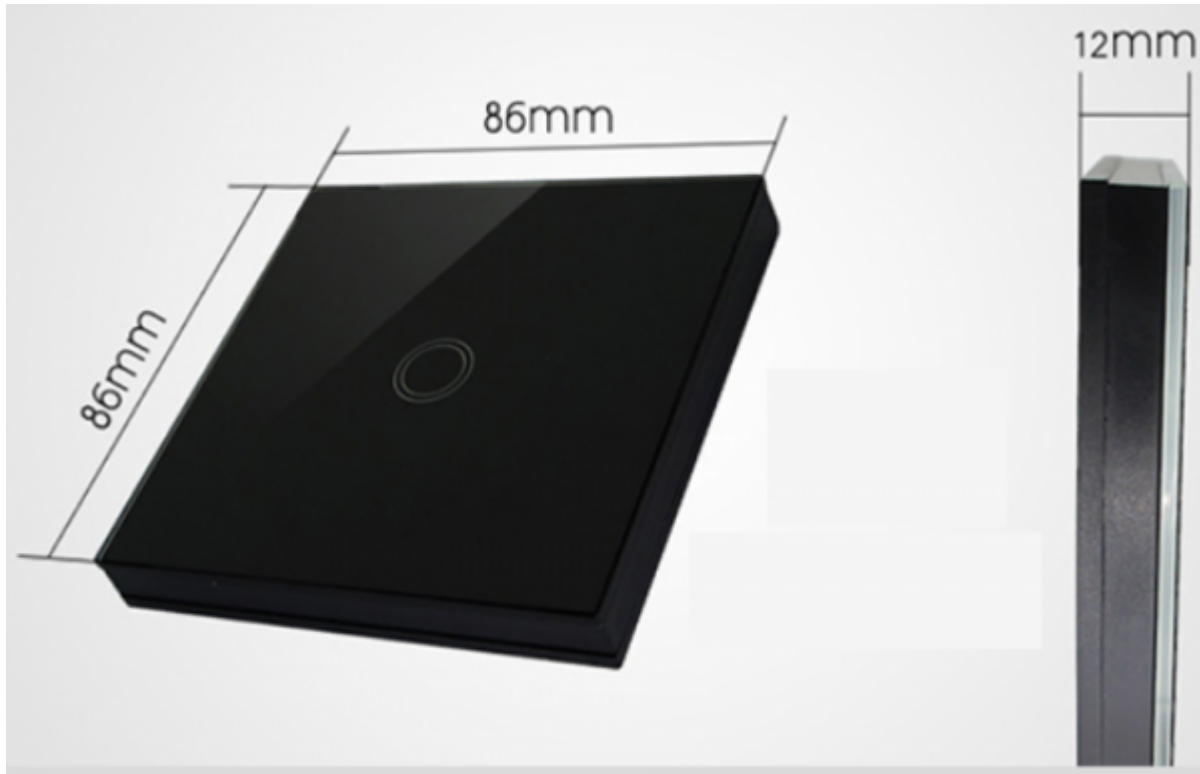
Technical specifications

Control mode	Touch
Material	Panel: toughened glass; Shell: fire retardant PC
Key life	100,000 cycles
Power	Battery 12 V type 27A

Build



Dimensions



From:
<http://wiki.hiq-universe.com/> -

Permanent link:
http://wiki.hiq-universe.com/doku.php?id=en:ms_main:lc-wxb-y&rev=1623628974

Last update: **2021/06/14 00:02**

