

IOT Linker 1 Ethernet Port

connected IoT devices for future connected services



Order code:	IOT-L2-1
Mounting:	DIN rail, wall
Dimensions:	47 x 52 x 30 mm
Connection:	1x Ethernet Port LAN

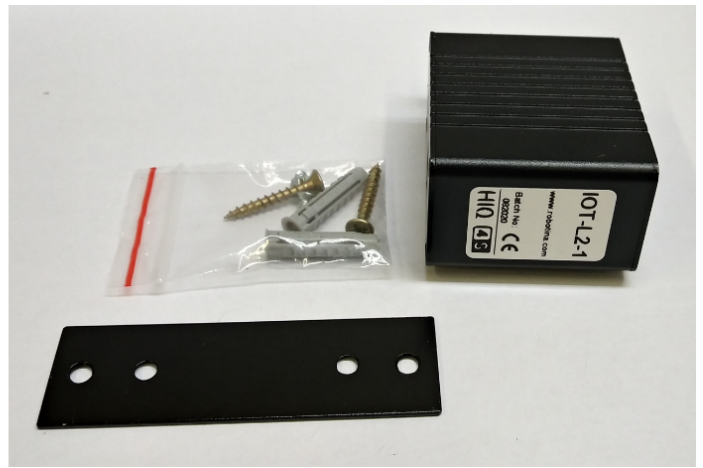
- Robust and safe connection of HIQ and 4S systems to HIQ Universe cloud platform.
- Secure access and communication (TLS encryption)
- Local data buffer, no data loss
- User data safety according to GDPR
- Secure remote access to HIQ MC controllers

Technical specifications

Power supply:	DC 5V/2A (Micro USB)
CPU:	Allwinner H3, Quad-core Cortex-A7 Up to 1.2GHz
RAM:	DD34 512MB
Storage:	MicroSD Slot x1
USB Host:	1x 2.0 Type-A
Network:	1x 10/100/1000Mbps Ethernet
Working temp.:	-20°C to 70°C

Mounting

DIN Rail or Wall



From:
<http://wiki.hiq-universe.com/> -

Permanent link:
http://wiki.hiq-universe.com/doku.php?id=iot_linker_1_ethernet_port&rev=1599995666

Last update: **2020/09/13 11:14**

