



USER MANUAL

RELAY SWITCH RS2-WE-F2

Power supply: 230V AC 50Hz

Switching capabilities: 230V AC – 2x 5A

Consumption: < 1W

Max. Output Power: 2 x 1150W (Resistive load)

Radio frequency range: 868.0 to 868.6 Mhz

RF power Max: +3dBm

Range: up to 30m indoor

Operational temperature: -10°C to 40°C

Protection rating: IP 30

Pairing: up to 22 controllers

EPP (EnOcean Profile): D2-01-12

Dimensions: 40mm x 44mm x 16.9mm

Weight: 34g

Warranty: 2 years

DANGER OF ELECTROCUTION



BEFORE ANY INSTALLATION MAKE SURE THE POWER SUPPLY IS DISCONNECTED TO AVOID ANY RISK OF ELECTROCUTION

USE CAUTIONS

Never use the device if it is not correctly installed and placed inside a connecting box in conformity with the current norms.

Keep the product far away from liquids.



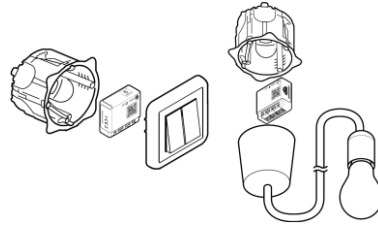
This product must be used indoor only



This product is conform to EnOcean radio protocol



INSTALLATION



Thanks to its small size, ON/OFF Relay Switch can be installed anywhere in the wall or the ceiling.

RELAY SWITCH INPUT/OUTPUT



N Terminal for the Neutral

L Terminal for the Line

I1 Input terminal for the wired switch 1*

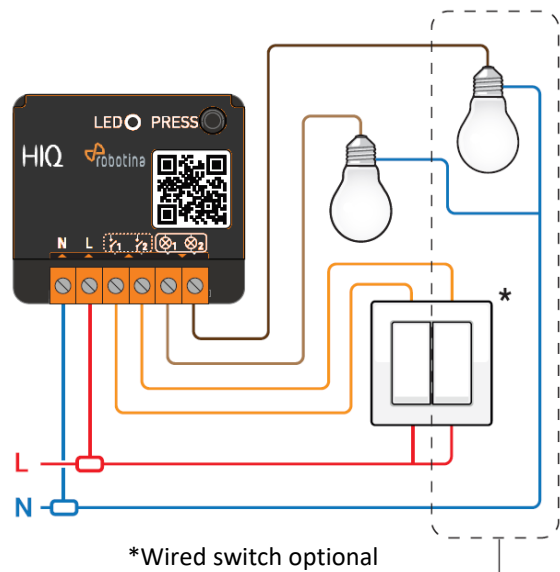
I2 Input terminal for the wired switch 2*

O1 Output 1 (controlled by I1)

O2 Output 2 (controlled by I2)

Each terminal can accept a cable of 2.5mm² maximum, stripped of 8mm.

INSTALLATION DIAGRAM FOR ONE OR TWO LIGHTS



*Wired switch optional

AUTO-DETECTION OF SWITCH TYPE

After turning the power supply ON, do a single push on the wired wall switch. The relay switch has an auto-detection system to automatically detect the type of wired wall switch (rocker or push-button) wired at the input.

Note: The same configuration is applied for both inputs (I1 and I2). It is not possible to combine a rocker switch with a push-button. To perform a new auto-detection, the Relay switch must be manually reset. (see reset procedure)

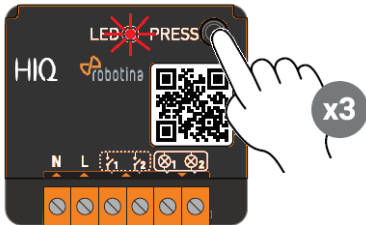
PAIRING PROCEDURE

To add a remote or wall switch or the Soft button (EnOcean compatible) you must enter the pairing mode, your light must be switched OFF. Relay must be power supplied.

FOR CHANNEL 1 (1/1 / 1)

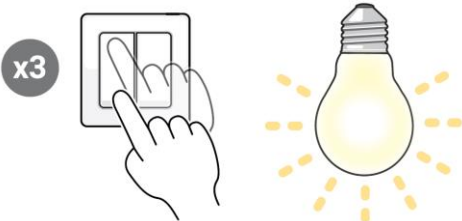
Two modes

1. From the module

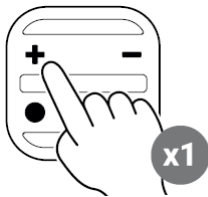


Launch the pairing by doing 3 consecutive presses on the relay switch button. The LED blinks red.

2. From the wired wall switch



Action the wired wall switch 3 times. The lighting connected in 1 blinks, meaning that the channel 1 is in »pairing/unpairing mode«.



You have now 30 seconds to pair your controller by briefly pressing on the button of your choice, this one will turn the light ON for the channel 1 the opposite button will turn it OFF



You have now 30 seconds to pair your Soft button by doing 5 brief consecutive presses on the button.



The LED of the relay switch will blink green twice, confirming the pairing of the two devices.



The light stops to blink, confirming the pairing of the two devices.

FOR CHANNEL 2 (1/2 / 2)

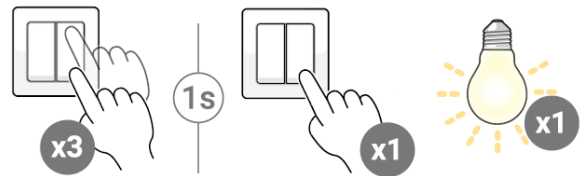
Two modes

1. From the module



Launch the pairing by doing 3 consecutive presses on the relay switch button. The LED blinks red. Wait 1 second and do a new press on the relay switch button.

2. From the wired wall switch



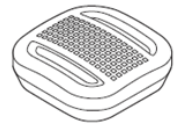
Press the wall switch 3 times (in less than a second). Wait 1 second and do a new press on the wall switch. The light connected in 2 blinks, meaning that the channel 2 1/2 / 2 is in »pairing/unpairing« mode.

NOTE: if the LED blinks orange during the pairing procedure, it means that more than 22 controllers are paired. You must remove one controller to add a new one.

USE OF YOUR SOFT BUTTON

The Soft button will work as follows:

Types of press	Action
Single press	Reversal
Double press	ON
Long press	OFF



UNPAIRING PROCEDURE

Do the same procedure as pairing and takes care of pressing the button chosen to control your electrical outlet.

RESET PROCEDURE

Relay switch must be power supplied.

1. Press more than 5 seconds on your module's button. The LED blinks orange.
2. Press once again the button (short press) to confirm the reset. If the reset is correct the LED blinks alternatively in red and green and stays green. Start again if necessary.
3. Your module has now its original settings.